

Task A.5.b.16
Hazardous Material Report

TAMPA INTERSTATE STUDY

State Project No. 99007-1402, WPI No. 7140004, FAP No. IR-9999(43)

Interstate 275 (I-275) from the Howard Frankland Bridge/Kennedy Boulevard ramps to the Dale Mabry Highway interchange on the east and just north of Cypress Street on Memorial Highway (S.R. 60), Hillsborough County.

Prepared For The
FLORIDA DEPARTMENT
OF
TRANSPORTATION

Prepared By
GREINER, INC.

In Association With
KNIGHT APPRAISAL SERVICES, INC.
PIPER ARCHAEOLOGICAL SERVICES

OCTOBER 1991

SUMMARY

This report presents the results of a Level I hazardous material site survey conducted for Phase II of the Tampa Interstate Study (TIS) in Tampa, Florida. The project area includes Interstate 275 (I-275) from the Howard Frankland Bridge eastward to Dale Mabry Highway and Memorial Highway (S.R. 60) to just north of Cypress Street. This report identifies known, and potential, hazardous material sites along the project corridor; evaluates their risk to impact the project; and provides recommendations for additional investigations, where required. The survey was conducted according to guidelines established by the Florida Department of Transportation (FDOT)-District 7.

In summary, this survey identified 18 sites of known, or suspected, hazardous materials use or storage along this TIS project corridor. Businesses which currently maintain underground storage tanks for petroleum products or sites that previously contained underground storage tanks constitute the majority of these sites. Other sites include a photograph processing lab, automotive maintenance facilities, a retail pump facility and a print shop. Each of these sites may be engaged in the use, storage, or disposal of hazardous materials such as fuels, automotive fluids, degreasers and other petroleum-based products.

Based on these findings, Level II hazardous material investigations are recommended at 11 of the 18 sites where soil/groundwater contamination could impact the TIS roadway improvement project. Level II investigations should include (1) an updated review of Florida Department of Environmental Regulation (FDER) and Hillsborough County Environmental Protection Commission (EPC) files and (2) the select sampling and analysis of the site's soil and groundwater. The sites recommended for these Level II investigations follow:

- Site No. 3 (former gas station)
- Site No. 4 (Pearless Pumps)
- Site No. 5 (Automatic Data Processing)
- Site No. 6 (Amoco #628)
- Site No. 7 (Chevron #48084)
- Site No. 9 (Nevada Bob's Golf & Tennis)
- Site No. 11 (Highway Oil Co.)
- Site No. 12 (Semco Printing)
- Site No. 13 (Jesto Transmission)
- Site No. 16 (Mobil #02-CNH)
- Site No. 18 (Drew Tile)

TABLE OF CONTENTS

	<u>Page</u>
Summary	i
List of Tables	iii
List of Exhibits	iii
1.0 PROJECT DESCRIPTION	1
2.0 LAND USE	2
3.0 HYDROLOGIC FEATURES	3
4.0 SURVEY METHODOLOGY	3
5.0 SURVEY RESULTS	4
6.0 SITE CHARACTERISTICS	9
7.0 RECOMMENDATIONS	10
Bibliography	
Appendix A: Storage Tank Registration Data	
Appendix B: Contamination Risk Rating	

LIST OF TABLES

<u>Table No.</u>	<u>Title</u>	<u>Page</u>
1	Investigated Sites in the Vicinity of the EA Study Area	6

LIST OF EXHIBITS

<u>Exhibit No.</u>	<u>Title</u>	<u>Follows</u>
1	Location Map	Page 1
2	Master Plan	Page 2
3	Investigated Sites	Page 4

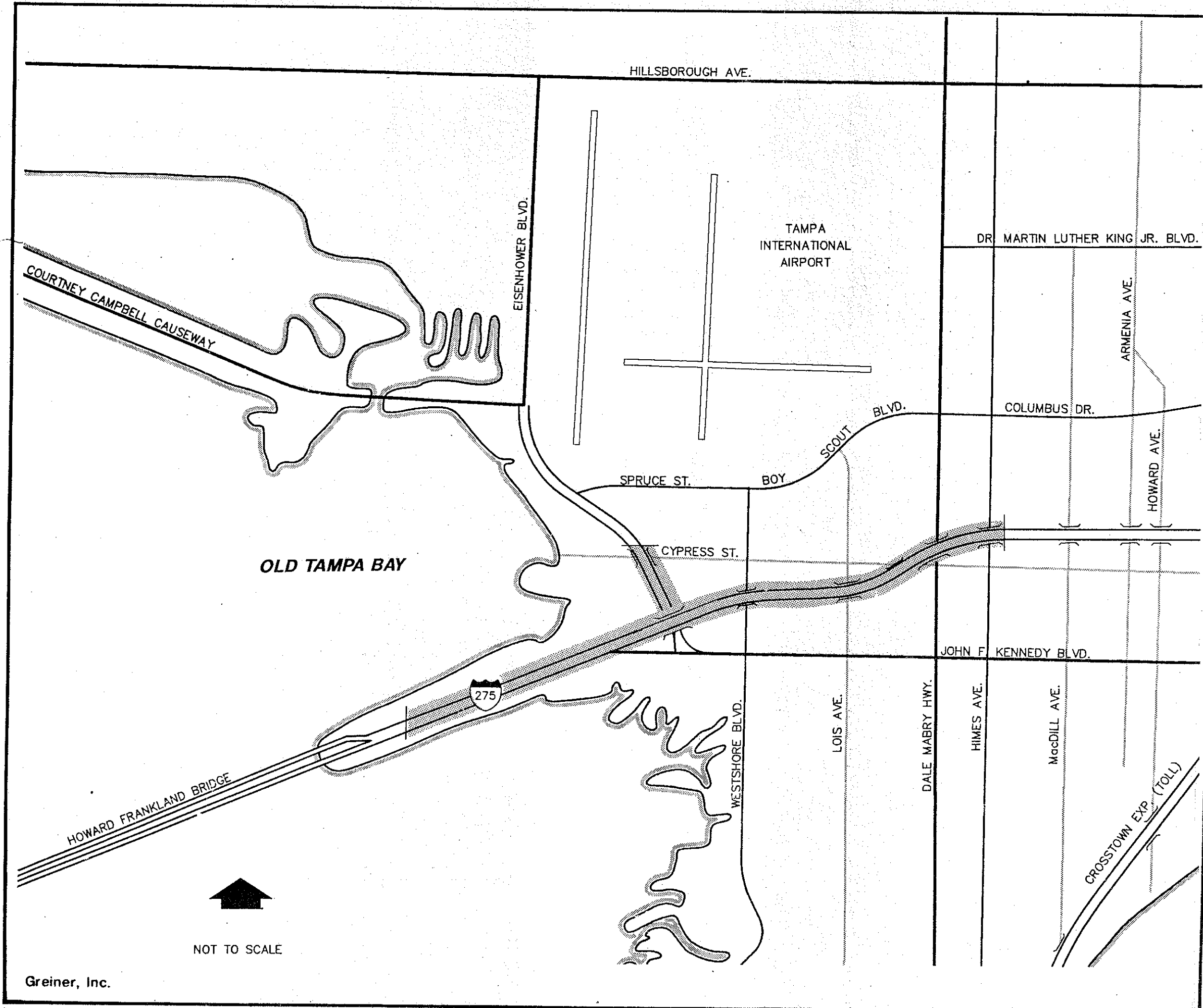
1.0 PROJECT DESCRIPTION

The Florida Department of Transportation (FDOT) is conducting environmental impact studies for Phase II of the Tampa Interstate Study (TIS). Specifically, this Hazardous Material Report has been prepared as part of Phase II services for an Environmental Assessment (EA) for the study area. The EA study area includes Interstate 275 (I-275) from the Howard Frankland Bridge eastward to Dale Mabry Highway and Memorial Highway (S.R. 60) to just north of Cypress Street. The study area is shown on Exhibit 1.

Currently, I-275 consists of a four-lane facility from the Howard Frankland Bridge to Memorial Highway (S.R. 60) and a six lane facility from Memorial Highway to east of the Dale Mabry Highway interchange. An auxiliary lane is also provided for the eastbound weaving section between the Westshore Boulevard and Lois Avenue interchanges.

Year 2010 traffic projections indicate I-275 is anticipated to carry 124,000 vehicles per day (vpd) west of the proposed Northwest Hillsborough Expressway and 157,000 vpd east to the Expressway. Using these 2010 forecasted traffic volumes along with other roadway design and safety factors, a "tier analysis" was conducted to develop and evaluate various roadway design concepts for the TIS area. As a result of the tier analysis, a Master Plan concept was recommended.

The Master Plan concept consists of a four-roadway system made up of interstate express lanes and separated local access freeway lanes. High Occupancy Vehicle (HOV)/Transitway lanes will be included within the interstate alignment ending at Trask Street with an envelope reserved to carry the HOV/Transitway lanes across the



LEGEND

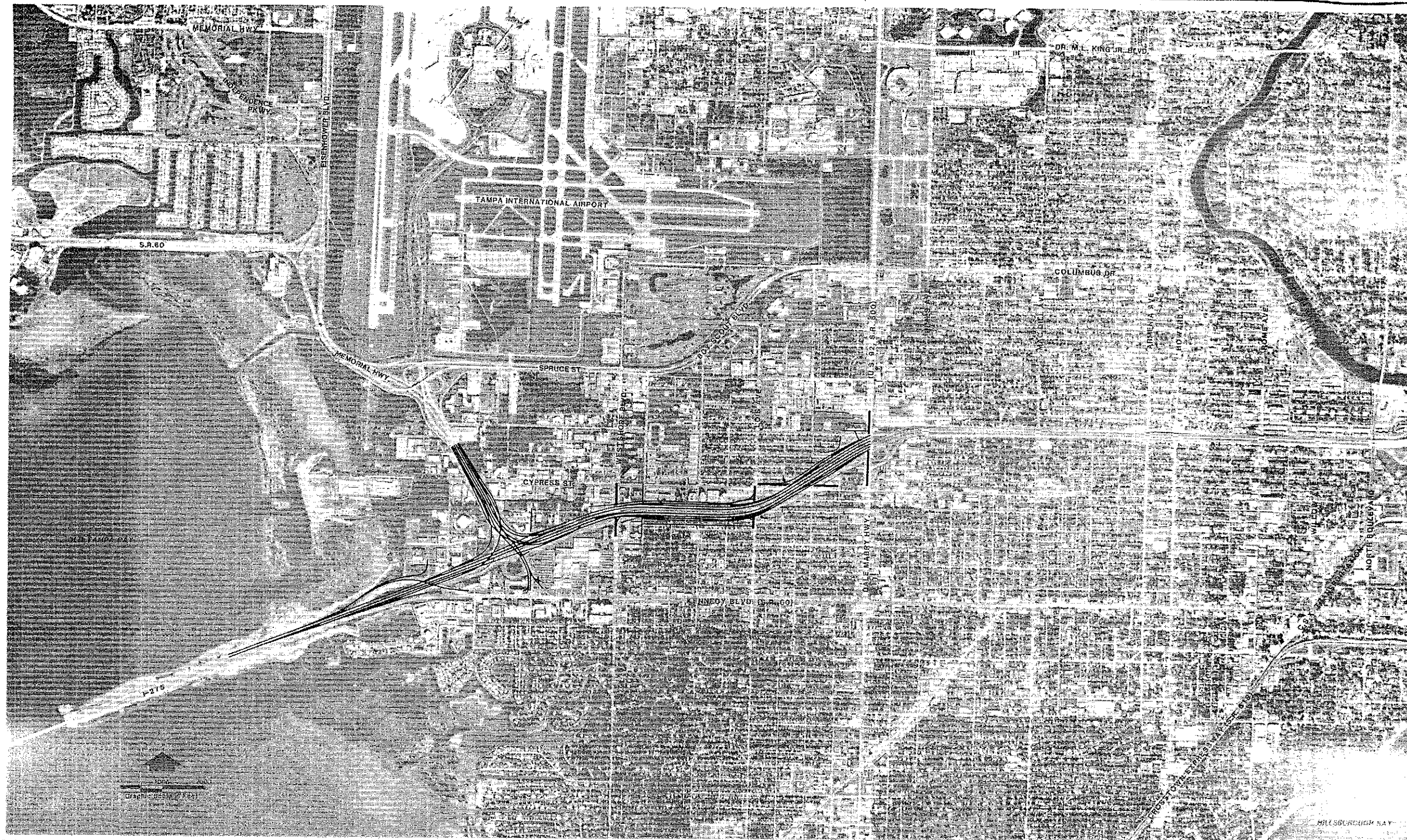
 Project Study Limits

FLORIDA DEPARTMENT OF TRANSPORTATION
HAZARDOUS MATERIAL SURVEY
TAMPA INTERSTATE STUDY
PHASE II
Hillsborough County, Florida
PROJECT STUDY LIMITS

Howard Frankland Bridge. HOV priority ramps will be provided to and from the east on I-275 at Trask Street. A fully directional interchange will be included for the I-275 connection to the Northwest Hillsborough Expressway, and direct ramping will be provided from Memorial Highway and Kennedy Boulevard to the Northwest Hillsborough Expressway. Existing interchange locations at Westshore Boulevard, Lois Avenue and Dale Mabry Highway will remain. New at-grade improvements include the Sherrill Street extension north from Memorial Highway and Kennedy Boulevard through I-275 to Spruce Street, and the new Lemon Street Connector to Westshore Boulevard from Occident Street. Exhibit 2 shows the Master Plan recommended concept on 1:1,000 scale aerial photography.

2.0 LAND USE

Within the study area, land uses adjacent to I-275 are predominantly business and commercial associated with the Westshore Business District. Commercial and office development is located at the interchange of I-275 and Memorial Highway. In the southeast quadrant is Westshore Plaza, a regional shopping mall. From Westshore Boulevard to Lois Avenue, a variety of commercial and hotel complexes exists. Located in the southeast quadrant of the Westshore Boulevard/I-275 interchange is a hotel and a multi-family apartment complex. On the south side of I-275, the land use consists predominantly of single-family residences to the Cypress Street overpass. On the north side of I-275, between Lois Avenue and Dale Mabry Highway, is a variety of commercial and small industrial properties. At the Dale Mabry Highway/I-275 interchange, commercial office and commercial retail land uses occur in all four quadrants. On the north side of I-275, just west of Dale Mabry Highway, is the Carver City residential neighborhood.



Greiner, Inc.

Photo Date:
Aug. 1987

FLORIDA DEPARTMENT OF TRANSPORTATION
HAZARDOUS MATERIAL SURVEY
TAMPA INTERSTATE STUDY
PHASE II
Hillsborough County, Florida
MASTER PLAN RECOMMENDED
CONCEPT

EXHIBIT 2

3.0 HYDROLOGIC FEATURES

The TIS area is located within Federal Emergency Management Agency flood zones A, B and C. Depth to the groundwater table varies with location and time of year but typically ranges from approximately 2 to 10 feet below ground surface.

Surface water features in the TIS area include Old Tampa Bay and the Lemon Street Canal. The Howard Frankland Bridge, located at the western limits of the project, crosses Old Tampa Bay. Old Tampa Bay is a tidally influenced navigable waterway. The Lemon Street Canal begins at Old Tampa Bay and is located north of the interstate and continues parallel with the interstate throughout the project limits. Because the Lemon Street Canal is undersize, heavy summer rainstorms cause flooding within the project corridor.

4.0 SURVEY METHODOLOGY

This hazardous material site survey was conducted in order to identify any known, or potential, hazardous material sites along the TIS project corridor. Because there is no single comprehensive source of information currently available which identifies hazardous material sites along the TIS project corridor, this survey consisted of the following tasks:

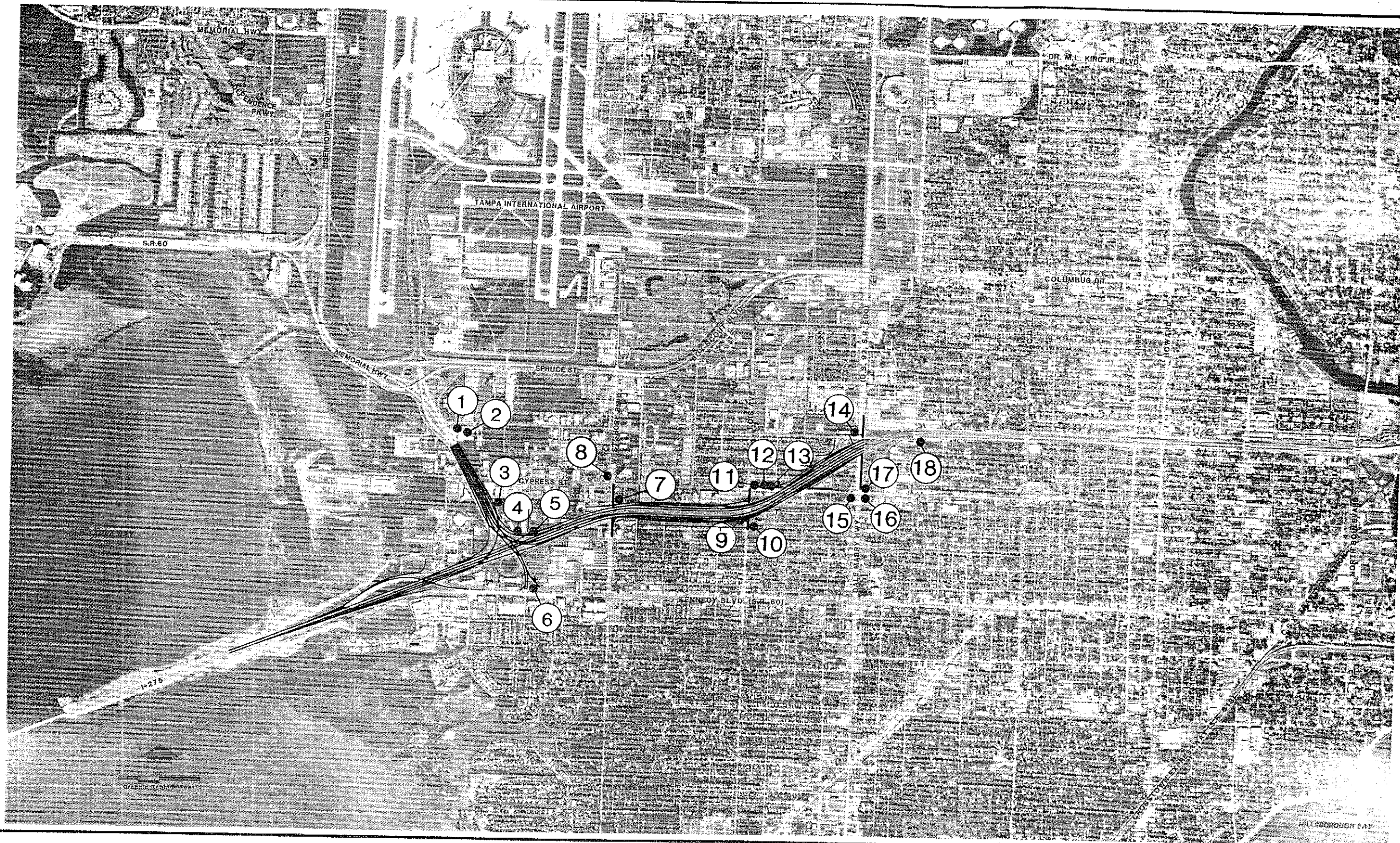
- * Contacting representatives of the following two agencies responsible for pollution control and hazardous material regulations in the study area:
 - Florida Department of Environmental Regulation (FDER), and
 - Hillsborough County Environmental Protection Commission (EPC);

- * Consulting the following publications by the FDER and the Tampa Bay Regional Planning Council (TBRPC) for locations of potential environmental contamination:
 - Stationary Tank Inventory System (FDER),
 - Contamination Detail Report (FDER),
 - Groundwater Management System Hazardous Waste Quick Look (FDER),
 - The Sites List, Summary Status Report (FDER), and
 - County Government Hazardous Waste Management Assessment for Hillsborough County (TBRPC);
- * Reviewing R.L. Polk Co. City Directories for Tampa from 1903 to 1988 to identify past land uses potentially involving hazardous material along the project corridor;
- * Evaluating historical aerial photography of the TIS corridor taken in 1960, 1966, 1972 and 1987;
- * Conducting field investigations within the study area in order to verify known hazardous material sites and to identify and investigate any previously unrecorded sites focusing on underground storage tanks and hazardous material use; and
- * Documenting with photographs the current condition of each investigated site.

All of the available information obtained from these tasks was evaluated according to the Project Development and Environmental (PD&E) Contamination Risk Evaluation Guidelines, Revision 2, developed by the FDOT District 7. Utilizing the FDOT risk evaluation rating system, each investigated site was assigned a rating of "No," "Low," "Medium," or "High" based upon the information collected during this survey. The risk rating assigned to each site indicates the potential for hazardous material problems which could impact the proposed Master Plan.

5.0 SURVEY RESULTS

Based on the results of this survey, 18 potential hazardous material sites were identified along the TIS project corridor. Exhibit 3 illustrates the approximate location of each identified site. Additional information including the name, address,



Greiner, Inc.

LEGEND

- ⑤ Hazardous Materials Site Locations
(See Table 1 for site characteristics.)

Photo Date:
Aug. 1987

FLORIDA DEPARTMENT OF TRANSPORTATION
HAZARDOUS MATERIAL SURVEY
TAMPA INTERSTATE STUDY
PHASE II
Hillsborough County, Florida
HAZARDOUS MATERIAL SITES

EXHIBIT 3

other site characteristics, and the site's risk rating is provided in Table 1. Photographs of each site have been retained by Greiner, Inc. and are contained in the project files.

Most of the 18 identified sites are (1) businesses which maintain underground storage tanks containing petroleum products or (2) sites that previously maintained underground storage tanks. Storage tank information from the FDER Stationary Tank Inventory is provided in Appendix A. Other sites include a photograph processing lab, automotive maintenance facilities, a pump sales business and a print shop. The survey did not reveal any toxic waste disposal areas, surface impoundments, landfills, or any other discharges of hazardous, or potentially hazardous materials or substances.

Based on the survey data, each identified site was assigned a rating of "No," "Low," "Medium," or "High" according to the risk criteria established by the FDOT District 7. The rating assigned to a site indicates the potential for hazardous material problems which could impact the roadway project. Each site rating is based on the following criteria:

1. Proximity to the right-of-way;
2. Physical land use history;
3. Current on-site conditions;
4. Storage of hazardous materials or generation of hazardous wastes or pollution; and
5. Known contamination or failure to comply with environmental regulations.

Risk ratings scores for each of the 18 sites are provided in Appendix B. Sites rated "No" are not discussed in this report. A rating of "Low" was assigned to seven of the

TABLE 1

INVESTIGATED SITES
IN THE VICINITY OF THE EA STUDY AREA
Tampa Interstate Study - Phase II

Site Number	Site Name & Address	Nature of Site	FDER I.D. Number	Potential Hazardous Materials	Storage Tanks	Regulatory Enforcement/Contamination	Approximate Distance From R-O-V*	Risk Rating**
1	Color Corporation of America 5410 Laurel St. Tampa, Florida	Photographic lab	None	Solvents, ink, metals	No	None reported	70 feet	Low
2	National Car Rental Systems Inc. 5402 Laurel St. Tampa, Florida	Rental car maintenance	None	Waste oil	No	None reported	340 feet	Low
3	Former Gas Station Frontage Rd. & Lemon St. Tampa, Florida	Vacant property; former site of a gas station	None	Petroleum	Possible	None reported	50 feet	Medium
4	Pearless Pumps 505 Sherrill St. Tampa, Florida	Pump sales and service	None	Waste oil and solvents	No	None reported	Completely within	Medium
5	Automatic Data Processing 4900 Lemon St. Tampa, Florida	Offices, shipping and receiving	298838703	Petroleum	Yes	None reported	Completely within	Medium
6	Amoco #628 5109 W. Kennedy Blvd. Tampa, Florida	Gas station	298521236	Petroleum	Yes	Contamination reported; EDI #295863; eligible for state cleanup	50 feet	Medium
7	Chevron #48084 701 N. Westshore Blvd. Tampa, Florida 33609	Former gas station	298625677	Petroleum	Removed	Contamination reported; EDI #295244; eligible for state cleanup	20 feet	Medium

TABLE 1

**INVESTIGATED SITES
IN THE VICINITY OF THE EA STUDY AREA
Tampa Interstate Study - Phase II
(Continued)**

<u>Site Number</u>	<u>Site Name & Address</u>	<u>Nature of Site</u>	<u>FDR I.D. Number</u>	<u>Potential Hazardous Materials</u>	<u>Storage Tanks</u>	<u>Regulatory Enforcement/ Contamination</u>	<u>Approximate Distance From R-O-V*</u>	<u>Risk Rating**</u>
8	Shell-Shop Service 101 N. Westshore Blvd. Tampa, Florida 33607	Gas station	298625080	Petroleum	Yes	Passed compliance inspection on 3/15/91	10 feet	Low
9	Nevada Bob's Golf & Tennis 612 Lois Ave. Tampa, Florida	Formerly Carlos Texaco gas station	None	Petroleum	Possible	None reported	Completely within	Medium
10	Marc Building 601 Lois Ave. Tampa, Florida	Formerly Lasada Mobil gas station	None	Petroleum	Possible	None reported	60 feet	Low
11	Highway Oil Co. 4138 W. Cypress St. Tampa, Florida	Gas station	298625440	Petroleum	Yes	Contamination reported; EDI #294450; eligible for state cleanup	10 feet	Medium
12	Senco Printing 4106 W. Cypress St. Tampa, Florida	Print shop	None	Solvents and inks	No	None reported	Completely within	Medium
13	Jesto Transmission 4102 W. Cypress St. Tampa, Florida	Automotive service	None	Petroleum	No	None reported	Completely within	Medium
14	Former Brake-O Facility 1406 N. Dale Mabry Hwy. Tampa, Florida	Automotive service	None	Petroleum	No	None reported	80 feet	Low
15	Ziebart 3808 W. Nassau St. Tampa, Florida	Automotive service	None	Petroleum	No	None reported	70 feet	Low

TABLE 1

**INVESTIGATED SITES
IN THE VICINITY OF THE EA STUDY AREA
Tampa Interstate Study - Phase II
(Continued)**

<u>Site Number</u>	<u>Site Name & Address</u>	<u>Nature of Site</u>	<u>FDER I.D. Number</u>	<u>Potential Hazardous Materials</u>	<u>Storage Tanks</u>	<u>Regulatory Enforcement/Contamination</u>	<u>Approximate Distance From R-O-W*</u>	<u>Risk Rating**</u>
16	Mobil #02-CNH 1101 N. Dale Mabry Hwy. Tampa, Florida	Gas station	298624998	Petroleum	Yes	Contamination reported; EDI #293176; eligible for cleanup reimbursement	10 feet	Medium
17	Lease Advantage & Allstar Limousine 1200 N. Dale Mabry Hwy. Tampa, Florida	Former underground storage tank location	None	Petroleum	Possible	None reported	40 feet	Low
18	Drew Tile 1401 Hines Ave. Tampa, Florida	Ceramic tile showroom and warehouse	298625369	Petroleum	Removed	None reported	Completely within	Medium

* Distance from the proposed right-of-way to the potential hazardous material source.

****Definition of FDOT Risk Ratings:**

No: After review of all available information, there is nothing to indicate hazardous material would be a problem. It is possible that hazardous material could have been handled on the parcel; however, all information (FDER reports, monitoring wells, water and soil samples, etc.) indicate problems should not be expected.

Low: The operation has a hazardous waste generator ID number, or deals with hazardous materials; however, based on all available information, there is no reason to believe there would be any involvement with hazardous materials.

Medium: After a review of all available information, indications are found (reports, Notice of Violation, consent order, etc.) that identify known soil and/or water contamination and that the problem does not need remediation, is being remediated (i.e., air stripping or the ground water, etc.), or that continued monitoring is required.

High: After a review of all available information, there is a potential for hazardous material problems on the parcel. Further assessment will be required after alignment selection to determine the actual presence and/or levels of hazardous materials and the need for remedial action.

identified sites because the handling and/or storage of hazardous materials at these facilities is not expected to impact the TIS project. A rating of "Medium" was assigned to eleven of the sites because the survey data indicated that these sites pose a potential risk of impacting the project. None of the sites were assigned a rating of "High."

6.0 SITE CHARACTERISTICS

This section provides a brief discussion of the seven "Low" and eleven "Medium" risk-rated sites. "Medium" sites are those recommended for additional investigations because they present some potential risk to impact the Master Plan project. "Low" rated sites are not expected to impact the project.

Site No. 1 (Color Corporation of America) - is located in an industrial complex on the southeast corner of Frontage Road and Laurel Street, and is a print shop. FDER has no record of hazardous waste generation at this facility. However, print shops typically generate waste inks and petroleum-based solvents. The proposed right-of-way acquisition is 70 feet west of this site.

Site No. 2 (National Car Rental Systems, Inc.) - is located in an industrial complex on the southeast corner of Frontage Road and Laurel Street, and is an auto service facility for company vehicles. FDER has no record of hazardous waste generation at this facility. However, auto service facilities usually generate waste oil and used batteries. The proposed right-of-way is 340 feet west of this site.

Site No. 3 (Former Gas Station) - is located at the northeast corner of Frontage Road and Lemon Street. The FDER has no records on the underground storage tanks at this site. It is not known if the underground storage tanks are still in place or whether soil/groundwater contamination has occurred. Some right-of-way acquisition for I-275 is planned along the site's western boundary.

Site No. 4 (Pearless Pumps) - is located along the east side of Sherrill Street, just north of I-275, and is a pump sales and service facility. This site generates waste oil and used cleaning solvents, which are stored in 55-gallon drums and disposed of by a private contractor. The facility is not registered with FDER as a small quantity hazardous waste generator. The entire site is planned for I-275 right-of-way acquisition.

Site No. 5 (Automatic Data Processing) - is located along the south side of Lemon Street, just north of I-275, and is an office building with shipping and receiving facilities. The site has two underground storage tanks containing gasoline and diesel, both of which are registered with FDER. No soil/groundwater contamination has been reported to FDER, and EPC did not document any violations during the September 6, 1990 compliance inspection. Right-of-way acquisition for I-275 is planned for the entire site.

Site No. 6 (Amoco #628) - is located along the north side of Kennedy Boulevard between the entrance and exit lanes to Memorial Highway, and is a full service gas station. Groundwater contamination was reported to FDER and the site is eligible for Early Detection Incentive (EDI) state cleanup. Petroleum odor has been reported in the northwest and southwest groundwater monitor wells. No right-of-way acquisition is proposed for this site.

Site No. 7 (Chevron #48084) - is located in the northeast corner of Westshore Boulevard and I-275, and is a former gas station. Groundwater contamination was reported to FDER and the site is eligible for EDI state cleanup. EPC has reported that the storage tanks were removed on February 5, 1991. Ten feet of right-of-way acquisition is planned along the site's western boundary.

Site No. 8 (Shell-Shep Service) - is located at the northwest corner of Westshore Boulevard and Cypress Street, and is a gas station. The site is registered with FDER but no soil or groundwater contamination has been reported. Three feet of right-of-way acquisition along the eastern property is planned at this site.

Site No. 9 (Nevada Bob's Golf & Tennis) - is located at the southwest corner of Lois Avenue and Lemon Street, and is a former gas station. FDER and EPC have no records on the underground storage tanks, and it is not known if the tanks are still in place. The absence or presence of soil/groundwater contamination has not been established. Right-of-way acquisition for I-275 is planned for the entire site.

Site No. 10 (Marc Building) - is located at the southeast corner of Lois Avenue and Cass Street, and is an office building. This site was previously a gas station. FDER has no record of soil or groundwater contamination at this site. Planned right-of-way acquisition is 60 feet north of the site.

Site No. 11 (Highway Oil Co.) - is located at the southwest corner of Lois Avenue and Cypress Street, and is a gas station. Groundwater contamination was reported to FDER and the site is eligible for EDI state cleanup. EPC has reported petroleum odor in the northwest groundwater monitor well. Right-of-way acquisition is not planned for this site; however, a stormwater management pond is planned for the parcel directly south of the site.

Site No. 12 (Semco Printing) - is located along the southern side of Cypress Street east of Lois Avenue, and is a print shop. FDER has no record of hazardous waste generation at this facility. However, print shops typically generate waste inks and petroleum-based solvents. Complete right-of-way acquisition is planned for this site.

Site No. 13 (Jesto Transmission) - is located along the southern side of Cypress Street and east of Lois Avenue, and is an auto service facility. FDER has no record of hazardous waste generation at this facility. However, auto service facilities usually generate waste oil and used batteries. Complete right-of-way acquisition is planned for this site.

Site No. 14 (Former Brake-O Facility) - is located at the southwest corner of I-275 and Laurel Street and is a former auto repair facility. FDER has no record of hazardous waste generation at this facility. However, auto service facilities usually generate waste motor fluids. No right-of-way acquisition is planned at this site.

Site No. 15 (Ziebart) - is located at the southwest corner of I-275 and Dale Mabry Highway, and is an automobile rust-proofing facility. FDER has no record of hazardous waste generation at this facility. However, the facility generates waste paint and thinners. No right-of-way acquisition is planned at this site.

Site No. 16 (Mobil #02-CNH) - is located on the northeast corner of Dale Mabry Highway and Grace Street, and is a full service gas station. Groundwater contamination was reported to FDER, and the site is eligible for EDI cleanup reimbursement. On April 24, 1990, EPC reported petroleum odor in the northwest and southwest groundwater monitor wells. No right-of-way acquisition is required at this site; however, a stormwater management pond is planned for the parcel directly north of the site.

Site No. 17 (Lease Advantage & Allstar Limousine) - is located at the southwest corner of I-275 and Dale Mabry Highway, and is a former underground storage tank site. FDER has no record of the tanks. No right-of-way acquisition is planned at this site.

Site No. 18 (Drew Tile) - is located west of Himes Avenue just south of I-275, and is a tile showroom and warehouse. The site previously contained one underground storage tank which was excavated in August 1989. No tank closure report was filed with EPC so it is unknown if soil or groundwater contamination exists. Complete right-of-way acquisition is planned for this site.

7.0 RECOMMENDATIONS

In accordance with FDOT guidelines, Level II hazardous material investigations are recommended at all "Medium" rated sites in order to verify the existence of soil/groundwater contamination which could impact the TIS roadway improvement project. These Level II investigations should be conducted prior to roadway right-of-way acquisition and project construction.

Initially, the Level II investigations should consist of an additional review of FDER and EPC files to update the status of any known and/or any new contamination at these "Medium" rated sites. Following the regulatory file update, subsurface investigations are recommended. These subsurface investigations should be conducted within the areas designated for right-of-way acquisition, utility relocation or stormwater management ponds. They should consist of field collection of soil and groundwater samples from each site and analysis for the presence of petroleum contamination at existing and former locations of underground storage tanks. At sites where underground storage tanks are not the expected source of contamination, any sampling and analytical work to be conducted should be determined on a site-specific basis. At sites where contamination is detected, further field investigations should be conducted to determine the extent of the contamination, identify the source, and estimate the cost of remediation.

The findings in this report are based upon preliminary information only and are not intended to replace more detailed studies such as subsurface soil/groundwater investigations. Rather, this report is intended as a guide for identifying potential hazardous material sites in the TIS area. Other technical studies may be required to determine the existence of site contamination prior to right-of-way acquisition, utility relocation or stormwater pond construction. Finally, it should be noted that potential hazardous material sites may extend beyond those identified in this preliminary survey because of limited historical and regulatory information, illegal dumping practices, and the lack of compliance with the FDER stationary tank registration and the hazardous waste generator programs.

BIBLIOGRAPHY

Stationary Tank Inventory System, State of Florida Department of Environmental Regulation, June 18, 1990.

Stationary Tank Inventory System, Contamination Detail Report, State of Florida Department of Environmental Regulation, June 18, 1990.

Stationary Tank Inventory System, Site Cleanup Ranking Report, State of Florida Department of Environmental Regulation, June 18, 1990.

Groundwater Management System, Hazardous Waste Quick Look, State of Florida Department of Environmental Regulation, June 18, 1990.

The Sites List, Summary Status Report, State of Florida Department of Environmental Regulation, June 1, 1988 - December 31, 1988, February 1989.

PD&E Potential Contamination Risk Evaluation Guidelines, Revision 1 (January 27, 1989), Florida Department of Transportation District 7, February 1, 1989.

Tampa City Directory, R.L. Polk & Company Publishers, 1903, 1910, 1920, 1930, 1940, 1950, 1960, 1970, 1980 and 1988.

County Government Hazardous Waste Management Assessment for Hillsborough County, prepared for Hillsborough County and the Tampa Bay Regional Planning Council, prepared by Environmental Science and Engineering, Inc., October 1984.

APPENDIX A
STORAGE TANK REGISTRATION DATA

APPENDIX A

STORAGE TANK REGISTRATION DATA

<u>Site Number</u>	<u>Site Name and Address</u>	<u>FDER I.D. Number</u>	<u>Tank Number</u>	<u>Capacity (gal.)</u>	<u>Installed (Year)</u>	<u>Contents</u>	<u>Construction</u>	<u>Monitor Wells</u>
5	Automatic Data Processing 4900 Lemon Street Tampa, Florida 33609	298838703	1	10,000	1981	Unleaded gas	Steel	Yes
			2	6,000	1985	Generator diesel	Fiberglass	
6	Amoco #628 5109 W. Kennedy Blvd. Tampa, Florida 33609	298521236	1	4,000	1973	Unleaded gas	Sacrificial Anode	Yes
			2	4,000	1973	Unleaded gas	Sacrificial Anode	
			3	8,000	1973	Unleaded gas	Sacrificial Anode	
			4	4,000	1973	Leaded gas	Sacrificial Anode	
9	Highway Oil Co. 4138 W. Cypress St. Tampa, Florida 33607	298625440	1	8,000	1969	Diesel	Steel	Yes
			2	12,000	1969	Unleaded gasohol	Steel	
			3	12,000	1969	Leaded gas	Steel	
14	Mobil #02-CNH 1101 N. Dale Mabry Hwy. Tampa, Florida 33607	298624988	1*	10,000	1969	Leaded gas	Steel	Yes
			1R1	12,000	1989	Unleaded gas	Steel	
			2*	10,000	1969	Unleaded gas	Steel	
			2R1	10,000	1989	Unleaded gas	Steel	
			3*	10,000	1969	Unleaded gas	Steel	
			3R1	10,000	1989	Unleaded gas	Steel	
			4*	10,000	1981	Unleaded gas	Steel	
			4R1	8,000	1989	Diesel	Fiberglass	
			5*	550	1963	Unleaded gas	Steel	
16	Drew Tile 1401 Himes Ave. Tampa, Florida 33622	298625369	5R1	1,000	1989	Used oil	Steel	
			1*	1,000	1976	Used oil	Fiberglass	
						Unleaded gas	Unknown	No

* Storage tank has been excavated.

Source: FDER STI-02 Stationary Tank Inventory, June 18, 1990.

APPENDIX B
CONTAMINATION RISK RATING

APPENDIX B

CONTAMINATION RISK RATING

<u>Site Number</u>	<u>Site Name</u>	<u>Proximity to the Right-of-Way (Hazardous Waste)</u>	<u>Proximity to the Right-of-Way (Pollutants)</u>	<u>Physical Land Use Survey</u>	<u>Existing Conditions</u>	<u>Storage of Hazardous Materials, etc.</u>	<u>Violation Record</u>	<u>Total Points</u>	<u>Risk Rating</u>
1	Color Corporation of America	2	0	3	2	2	0	9	Low
2	National Car Rental Systems, Inc.	0	2	2	2	2	0	8	Low
3	Former Gas Station	0	4	4	4	2	0	14	Medium
4	Pearless Pumps	4	0	4	3	2	0	13	Medium
5	Automatic Data Processing	0	3	4	4	2	0	13	Medium
6	Amoco #628	0	4	4	2	2	4	16	Medium
7	Chevron #48084	0	4	4	2	4	4	18	Medium
8	Shell-Shep Service	0	2	2	2	2	0	8	Low
9	Nevada Bob's Golf & Tennis	0	3	4	4	2	0	13	Medium
10	Marc Building	0	2	2	0	2	0	6	Low
11	Highway Oil Co.	0	4	4	2	2	4	16	Medium
12	Senco Printing	4	0	4	4	2	0	14	Medium

APPENDIX B

CONTAMINATION RISK RATING
(Continued)

Site Number	Site Name	Proximity to the Right-of-Way (Hazardous Waste)	Proximity to the Right-of-Way (Pollutants)	Physical Land Use Survey	Existing Conditions	Storage of Hazardous Materials, etc.	Violation Record	Total Points	Risk Rating
13	Jesto Transmission	0	4	4	4	2	0	14	Medium
14	Brake-O	0	2	2	0	2	0	6	Low
15	Ziebart	2	0	3	3	2	0	10	Low
16	Mobil #02-CNH	0	4	4	2	2	4	16	Medium
17	Lease Advantage	0	2	2	0	2	0	6	Low
18	Drew Tile	0	4	4	4	2	0	14	Medium

Risk Component Rating:

0-2 points = Low
3-4 points = Medium
5 points = High

Total Point Rating:

0-4 points = No
5-12 points = Low
13-18 points = Medium
19-25 points = High