



U.S. Department
of Transportation
**Federal Highway
Administration**

Florida Division

April 15, 2019

3500 Financial Plaza, Suite 400
Tallahassee, Florida 32312
Phone: (850) 553-2201
Fax: (850) 942-9691
www.fhwa.dot.gov/fldiv

In Reply Refer To:
HDA-FL

Mr. Kirk Bogen, P.E.
Environmental Management Engineer
Florida Department of Transportation, District Seven
Environmental Management Office

Subject: Tampa Interstate Study (TIS) Supplemental Environmental Impact Statement (SEIS): I-275 from the Howard Frankland Bridge to north of Martin Luther King Jr. Blvd. and I-4 from I-275 to east of 50th St. -Potential Section 4(f) Applicability (FPID: 258337-2)

Dear Mr. Bogen:

The Federal Highway Administration has completed the review of the referenced document received via email on March 11, 2019. We commend the level of information and consultation the FDOT has had with the City of Tampa, as the Official with Jurisdiction (OWJ) over the facilities discussed in the document.

Based on the review of the information provided in the Section 4(f) Technical Memorandum and coordination with the City of Tampa, included with your letter, we have determined the following:

1. Section 4(f) would not apply to the resources listed in Table 4 of the technical memorandum as there is no temporary or permanent acquisitions or occupations of those resources nor will there be any meaningful indirect impacts to those resources impacted/affected.
2. Section 4(f) would not apply to the resources listed in Table 2 of the technical memorandum as they are either transportation facilities which were funded and constructed to primarily serve for transportation functions or because they are generally located within transportation right of way and the proposed project includes maintaining the continuity of these trails.
3. The Julian B. Lane Park is a Section 4(f) property.
4. The Perry Harvey Sr. Park is a Section 4(f) property.

FHWA understands that FDOT is preparing a Case Study Report to comply with Section 106 of the National Historic Preservation Act to document the impacts that could be applicable to Section 4(f). Once it is available it will be submitted to FHWA for determination of applicability of Section 4(f).

Mr. Bogen
April 15, 2019

2

FHWA recommends FDOT to continue working with the OWJ to identify ways to avoid, and where avoidance is not feasible and prudent, minimize the use of Section 4(f) properties.

If you have any questions, please do not hesitate to contact Mr. Luis D. López-Rivera at (407) 867-6420 or e-mail luis.d.lopez@dot.gov.

Sincerely,

A handwritten signature in black ink, appearing to be "James Christian", written over a horizontal line.

FOR: James Christian, P.E.
Division Administrator



Section 4(f) Parks and Recreational Resources Update and Applicability Technical Memorandum

**Tampa Interstate Study
Supplemental Environmental Impact Statement**

**I-275 from Howard Frankland Bridge to
North of Dr. Martin Luther King, Jr. Boulevard
and**

**I-4 from I-275 to East of 50th Street with New Alignment from I-4 South to
the Existing Selmon Expressway and Improvements to the Selmon
Expressway from the Kennedy Boulevard Overpass East to Maydell Drive**

Work Program Segment # 258337-2

Segments 1A, 2A, 2B, 3A, 3B and 3C

December 2018

Purpose of the Technical Memorandum

The purpose of this technical memorandum is to update the list of parks and recreational resources that will be evaluated further with the Supplemental Environmental Impact Statement/Section 4(f) Evaluation (SEIS) for the Tampa Interstate Study (TIS). This update pertains to sections 1A, 2A, 2B, 3A and 3B of the project.

Section 4(f) refers to the original section within the U.S. Department of Transportation Act of 1966 which provided for consideration of park and recreation lands, wildlife and waterfowl refuges, and historic sites during transportation project development. The secretary may approve projects requiring the use of publicly owned land of a public park, recreation area, or wildlife/waterfowl refuge, or land of a historic site of national, state, or local significance (as determined by the officials with jurisdiction) only if-

- There is no feasible and prudent alternative to such use, and
- The project includes all possible planning to minimize harm.

The TIS Final Environmental Impact Statement/Section 4(f) Evaluation (FEIS) was approved in 1996, and was subsequently reevaluated. The 1996 TIS FEIS documented the project at the time involved “use” of land from one City of Tampa park; three individually National Register of Historic Places (NRHP) listed/eligible properties; and structures in the West Tampa National Register Historic District, the Ybor City National Historic Landmark District, and the proposed Tampa Heights Multiple Property Listing. The acquisition of those properties required a determination of applicability under Section 4(f) of the U.S. Department of Transportation Act of 1966.

This technical memorandum provides an update to the list of potential Section 4(f) protected properties involving parks and recreational properties and the relationships of each property to each alternative and design option. The purpose is to provide information to make a determination of Section 4(f) applicability for these resources. An update of cultural resources that will address the historic districts and resources will be prepared under a separate cover.

Affected Environment from the 1996 TIS FEIS

The 1996 TIS FEIS identified sixteen (16) parks and recreational facilities located adjacent to, or in the vicinity of, the proposed project. As documented in the 1996 TIS FEIS, in a letter dated May 19, 1994, the Federal Highway Administration (FHWA) determined that Section 4(f) applies to all sixteen parks. Fifteen of those were determined by FHWA to have no Section 4(f) use. FHWA approved use of the sixteenth resource, Perry Harvey Sr. Park with approval of the FEIS on November 22, 1996. Perry Harvey Sr. Park is owned by the City of Tampa and maintained by the Parks Department.

Affected Environment for the TIS SEIS Project

Upon review, of the sixteen (16) parks facilities identified in the 1996 TIS FEIS, fifteen (15) are active parks and one is closed but remains a park property. The one closed park is Phil Bourquardez Park and is not intended to be reopened. One other facility, Angus Goss Memorial Pool, closed its pool facilities, but reopened as a dog park.

Several new park facilities are present that were not present at the time of the 1996 TIS FEIS. With this update, sixteen (16) additional potential Section 4(f) resources have been identified for a total of thirty-two (32) park, recreational and trail facilities within proximity of the project area. **Table 1** lists all park, recreational and trail facilities within approximately 2000 feet of the project as well as the associated segments. This table also lists its proximity to the existing or proposed right of way of this project.

Table 1 – List of Park/Recreational/Trail Resources and Proximity to Project ROW

Project Segment	FEIS ID#	Park, Trail or Other	Resource	Agency with Jurisdiction	Proximity to right of way for I-275, I-4 or SR 60
West of 1A		Trail	Howard Frankland Bridge (I-275) Shared Use Path (proposed)	FDOT	Runs within existing I-275 transportation ROW
1A		Park	Cypress Point Park	City of Tampa	600' from SR 60 ROW
1A		Park	Diamondback Nature Preserve	Hillsborough County	Adjacent to I-275 ROW
1A		Trail	West Tampa Greenway (proposed)	City of Tampa	Crosses SR 60/I-275 ROW and within transportation ROW
1A		Park	Charles B Williams Park	City of Tampa	700' from ROW
2A		Park	Jim Walter Park	City of Tampa	800' from ROW
2A	1	Park	MacFarlane Park	City of Tampa	Adjacent to I-275 ROW
2A	2	Park	Salcines Mini-Park	City of Tampa	350' from I-275 ROW
2B	3	Park	Julian B Lane Riverfront Park	City of Tampa	Adjacent to ROW
2B		Trail	Hillsborough River Greenway	City of Tampa	Crosses ROW
2B		Other	Hillsborough River Paddling Trail	State of Florida	Crosses ROW
2B		Trail	Tampa Riverwalk Trail	City of Tampa	Crosses ROW
2B		Park	Water Works Park	City of Tampa	Adjacent to ROW
2B	4	Park	Phil Bourquardez Park	City of Tampa	800' from I-275 ROW
2B	5	Park	Herman Massey Park	City of Tampa	>1000' from I-275 ROW
2B	6	Park	Perry Harvey Sr. Park	City of Tampa	Adjacent to ROW
2B	7	Park	Fernando Mesa Park (Formerly Morgan Street Mini Park)	City of Tampa	>1000' from I-275 ROW
2B		Park	Tampa Park Plaza	City of Tampa	>1000' from I-275 ROW
2B		Trail	East West Green Spine Proposed Shared Use Path/Bike Facility	City of Tampa	Crosses ROW
2B		Trail	Interim Tampa Heights Greenway	FDOT	Within FDOT ROW
2B	10	Park	Cuscaden Park and Playground	City of Tampa	900' from I-4 ROW
2B	8	Park	Robles Park and Playground	City of Tampa	Adjacent to ROW
2B	9	Park	Borrell Park (Formerly Nebraska Ave Park)	City of Tampa	200' from I-275 ROW
2B	15	Park	Ragan Park	City of Tampa	>2000' from I-275 ROW
2B	16	Park	Angus Goss Memorial Pool (now dog park)	City of Tampa	200' from I-275 ROW
3A		Park	Ybor City Museum State Park	State of Florida	800' from I-4 ROW
3A	11	Park	Centennial Park	City of Tampa	>1000' from I-4 ROW
3A		Park	East Ybor Park	City of Tampa	300' from I-4 ROW
3A		Park	Alfred Barnes Jr Park	City of Tampa	900' from I-4 ROW
3B	13	Park	Highland Pines Park	City of Tampa	800' from I-4 ROW
3B	14	Park	Oak Park	City of Tampa	>1000' from I-4 ROW
3C*	12	Park	McKay Bay Nature Park/Wildlife Refuge	City of Tampa	Adjacent to Selmon Expwy.

* Outside SEIS limits as Segment 3C has been constructed, but shown here as it was in the 1996 TIS FEIS

Figure 1 shows the locations of all of the facilities noted in Table 1. Also noted is the identification number assigned to that facility in the 1996 TIS FEIS. Facilities without a number were not present or not considered in the 1996 TIS FEIS.

Trail Facilities Recommended as Exempt from Section 4(f)

Six of the 32 facilities are linear trails and greenways that are used for transportation purposes situated within public transportation right of way (City of Tampa or FDOT owned). In the case of multi-use paths and trails, since these are considered transportation facilities located within transportation right-of-way (ROW) they are exempt from Section 4(f) under 23 CFR 774.13(f)(3) or 23 CFR 774.13(f)(4). These trails include the Howard Frankland Bridge Shared Use Path (proposed), West Tampa Greenway (portions proposed), Hillsborough River Greenway (portions proposed), Tampa Riverwalk (in-place), the interim Tampa Heights Greenway (in place but planned to be extended/relocated), and East-West Green Spine (portions proposed). This group includes both planned and existing facilities, it is important to note that these facilities are designated as generally located within the Right of Way rather than a specific location within the Right of Way (whether extant or proposed).

Table 2 lists these six trail facilities and information related to the status of the facility, relationship to the project and the exemption which applies to that facility. None of the proposed alternatives will interrupt the connectivity of either Section 4(f) protected trails or the trails that are not protected under Section 4(f).

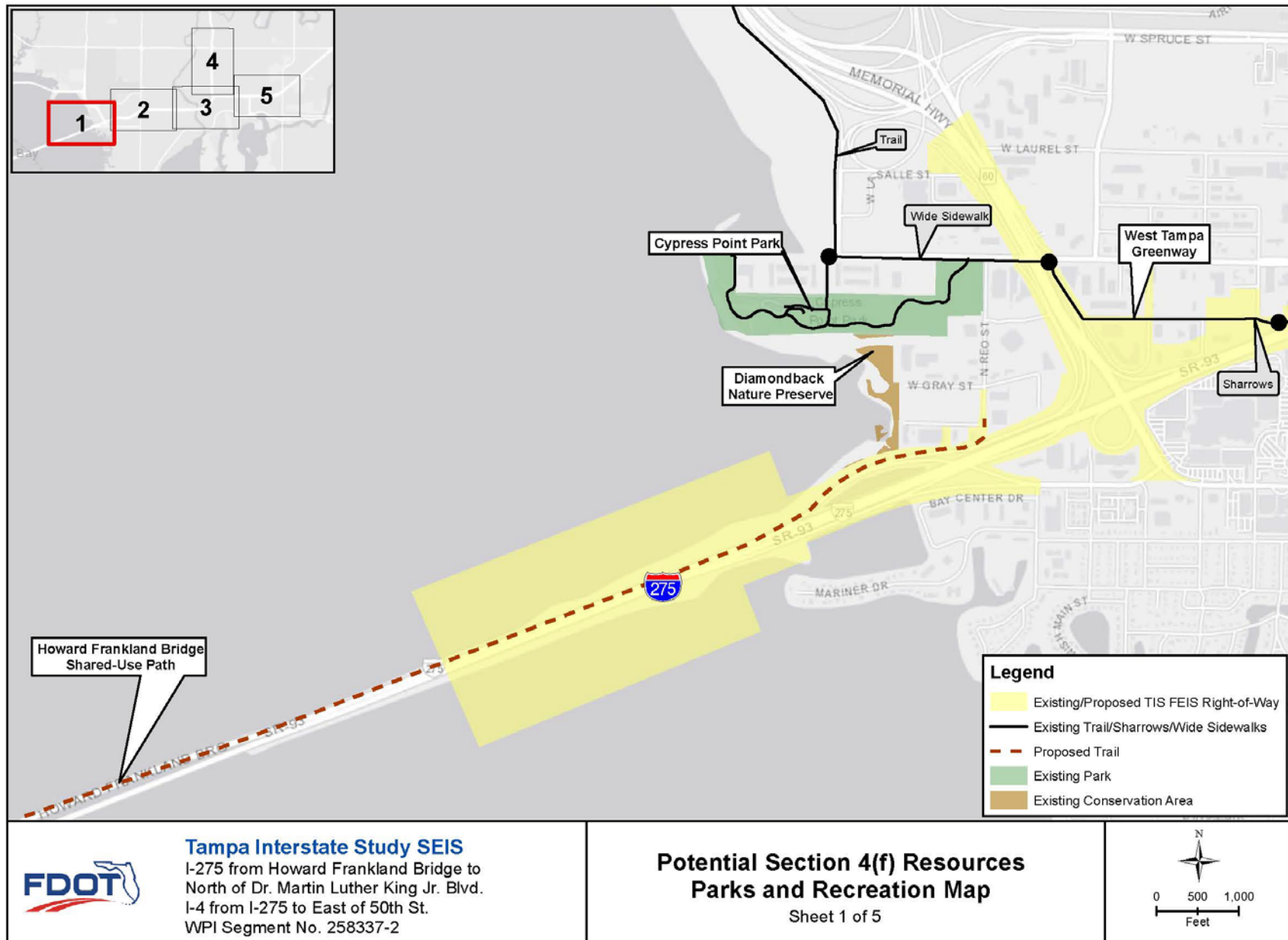


Figure 1 Potential Section 4(f) Resources Parks and Recreation Map

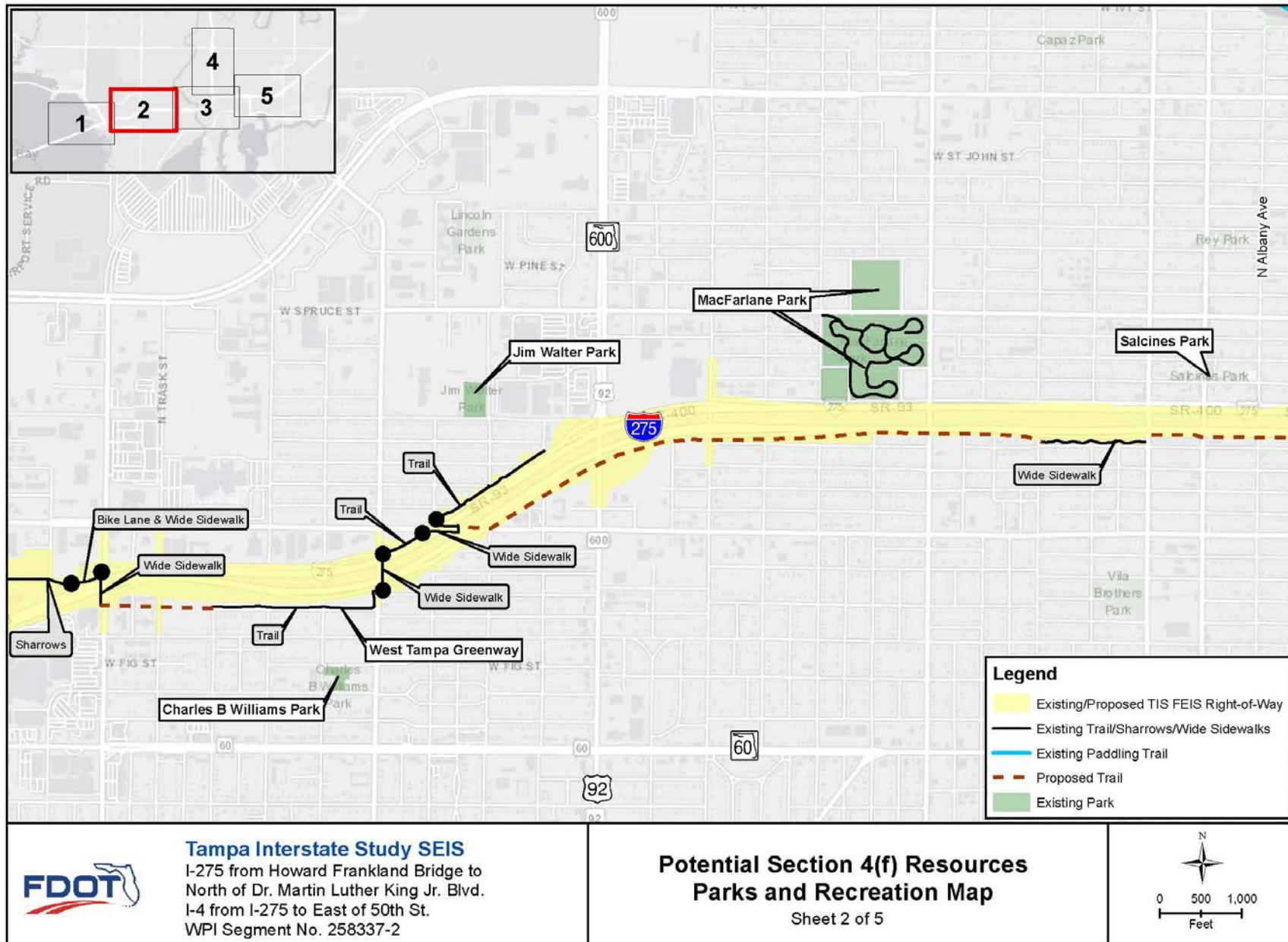


Figure 1 Potential Section 4(f) Resources Parks and Recreation Map

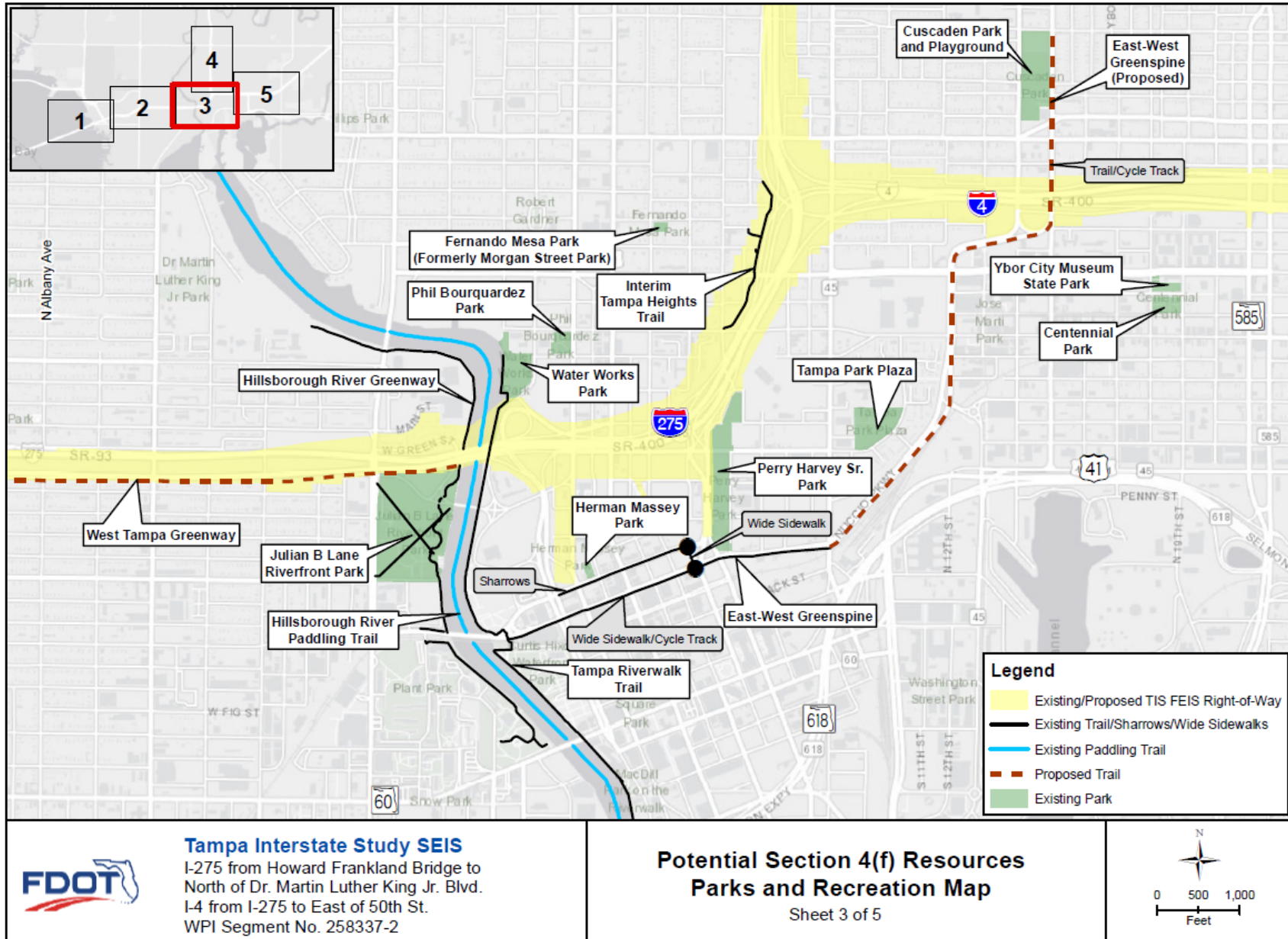


Figure 1 Potential Section 4(f) Resources Parks and Recreation Map

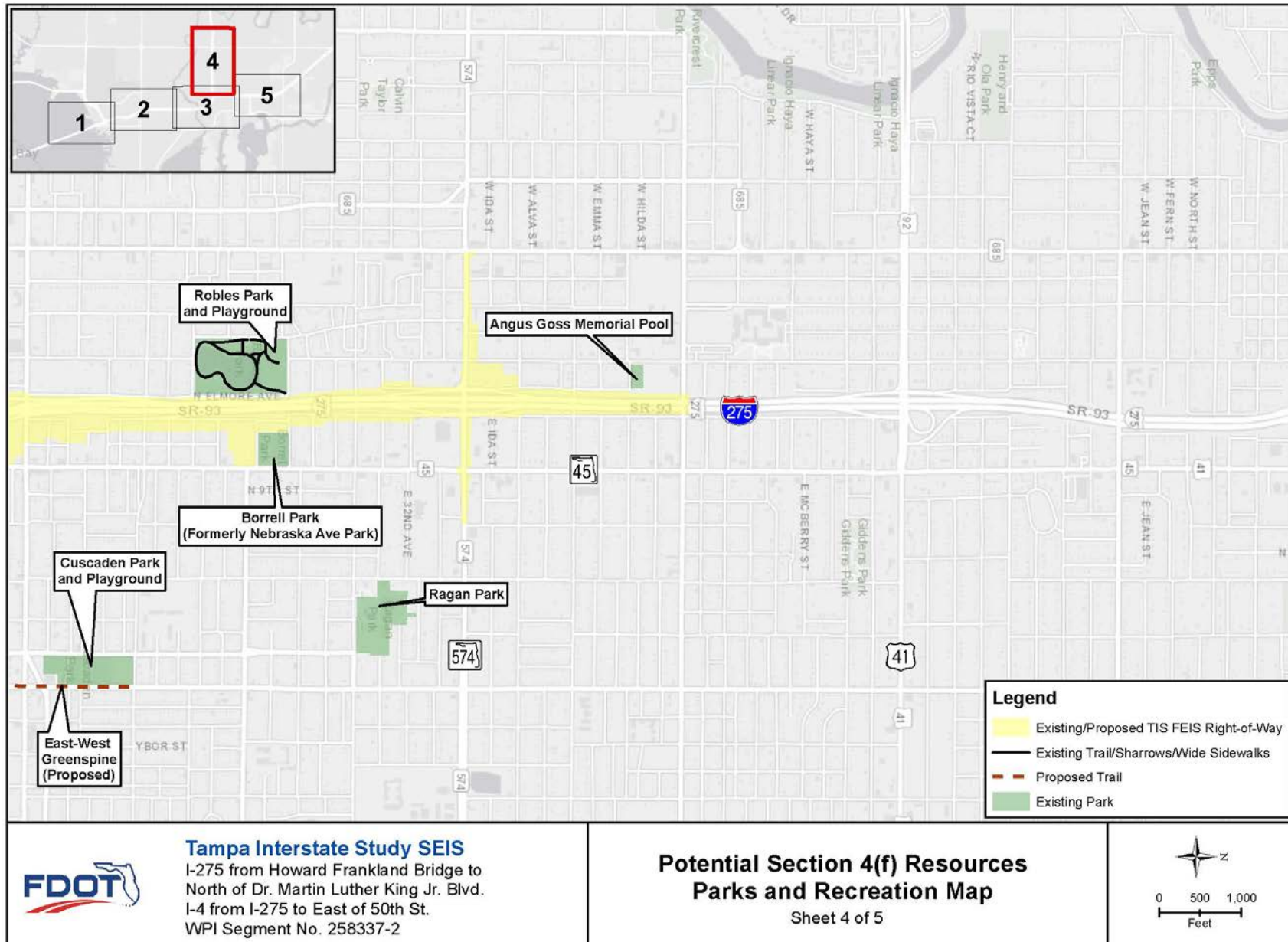


Figure 1 Potential Section 4(f) Resources Parks and Recreation Map

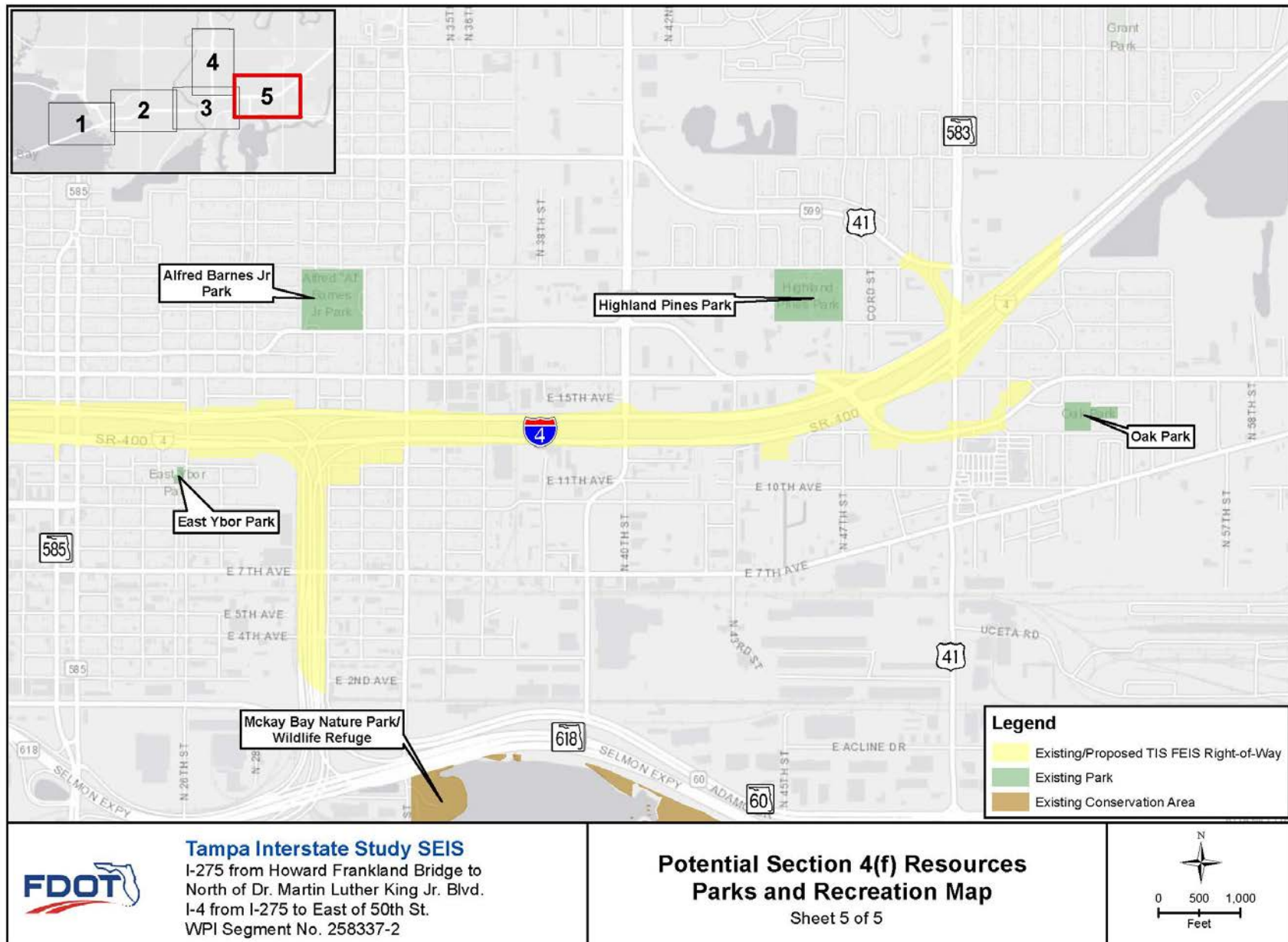


Figure 1 Potential Section 4(f) Resources Parks and Recreation Map

Table 2 – Trail, Paths, Bikeway Facilities Recommended as Exempt from Section 4(f)

Project Segment	FEIS ID#	Resource Description						Recommended Section 4(f) applicability	
		Resource	Agency with Jurisdiction	Type – Activities, Features, Attributes	Status of facility (planned, in place)	Area	Resource relationship to project	Section 4(f) does not apply as facility is exempt under 23 CFR 774.13(f)(3)	Section 4(f) does not apply as facility is exempt under 23 CFR 774.13(f)(4)
1A		Proposed Howard Frankland Bridge Shared Use Path	FDOT	Shared use path. Path will be accommodated <u>within the FDOT public transportation ROW</u> to link to Reo Street	Not in place – planned to be built by FDOT as part of Howard Frankland Bridge Replacement project	Linear, 1.8 miles in length east of HF Bridge	The eastern connection to Reo Street will be modified by FDOT as part of this project when Reo Street is reconfigured.	Section 4(f) does not apply	-
1A		West Tampa Greenway (portions proposed)	City of Tampa	Public Multi-Use Trail <u>within public transportation ROW</u> (City/FDOT) - The sections of the multi-use corridor include sidewalks, trails, on-road bicycle routes/lanes, and side paths. Segments fall within public transportation ROW under various ownership depending on location.	Portions are in place, gaps to be filled with various projects by FDOT or the City of Tampa including this TIS SEIS	Linear, 6.0 miles in length when completed	A segment of the corridor on East Frontage Road, owned by City of Tampa, will be rebuilt by FDOT as part of this project. In addition, some missing links will be filled by FDOT as part of this project	Section 4(f) does not apply	-
2B		Hillsborough River Greenway (portions proposed)	City of Tampa	Public trail <u>for transportation purposes</u> from along Hillsborough River at I-275 through Julian B Lane Park to Tampa Preparatory School. Runs through JB Lane park adjacent to project and will be accommodated <u>within FDOT public transportation ROW</u> under I-275 and will be maintained with all design options.	Portions are in place, gaps to be filled with various projects by the City of Tampa	Linear, 1.4 miles in length when completed	Crosses under bridge carrying I-275 over the Hillsborough River	-	Facility provides transportation link to safely connect bicyclists and pedestrians to JB Lane Park and other points – Section 4(f) does not apply
2B		Tampa Riverwalk Trail	City of Tampa	Public trail <u>for transportation purpose</u> along the east side of the Hillsborough River (includes the former Doyle Carlton Drive Park which connects the Riverwalk with Water Works Park). Is situated under I-275 between the river and Doyle Carlton Drive. Was constructed with funds from 2012 TIGER grant.	In place	Linear, 2.6 miles in length	Crosses under bridge carrying I-275 over the Hillsborough River	-	Facility constructed with TIGER funds for transportation purposes to improve safety of bicyclists and pedestrians in downtown area –Section 4(f) does not apply
2B		Interim Tampa Heights Greenway	FDOT	Multi-use path <u>within FDOT public transportation ROW</u>	Interim path constructed after FEIS approved during operational improvements to I-275/I-4 interchange. Planned by FDOT to be relocated and extended as part of this project to become the Tampa Heights Greenway, a Commitment in the FEIS	Linear, 1.0 mile in length when completed, 0.25 miles interim length	Will be extended by FDOT as part of this project, the proposed alignment will vary by Design Option	Section 4(f) does not apply	-
2B		East West Green Spine Proposed Shared Use Path/Bike Facility	City of Tampa	Proposed shared use path/bike facility <u>within public transportation ROW</u> of City streets Nuccio Parkway and 15 th Street.	Portions in place west of Nuccio Parkway and will be extended by the City with subsequent projects	Linear, 3.4 miles in length when completed	If built before this project, will be situated within the transportation ROW for 15 th Street and situated under the I-4 overpass bridge that may be rebuilt or widened	Section 4(f) does not apply	-

Source: Florida Geographic Data Library and City of Tampa Parks and Recreation

Environmental Consequences for the TIS SEIS Project

Review of Facilities for Potential Section 4(f) impacts

Table 3 lists potential noise, visual and access effects of the TIS Project to all facilities listed in Table 1 that were considered for potential Section 4(f) impacts. A more definitive assessment of noise impacts will be determined at a later time when the noise study is completed. All potential impacts will be addressed in the SEIS/Section 4(f) Evaluation document.

Table 4 lists all other facilities listed in Table 1 that are not listed in Table 3 and have no potential use. This table provides an evaluation of potential noise, visual and access effects of the TIS SEIS Project on these facilities. Park facilities not located adjacent to the proposed ROW are not anticipated to be involved (there is no permanent acquisition), so those are noted as “No Involvement”.

Section 4(f) impacts to Recreation Facilities from the TIS FEIS

The 1996 TIS FEIS required the Section 4(f) use of Perry Harvey Sr. Park, owned by the City of Tampa and maintained by the Parks Department. This facility is still present (Segment 2B). In the FEIS, the Section 4(f) use involved a 15-30 ft. wide strip of proposed right of way (1.1 acres) along the western side of the park along Orange Avenue to accommodate the widening of Orange Avenue and access ramp to I-275. The park has been modified and its park amenities have changed slightly, most notably the paved skateboard area has been relocated. The use required by the project has changed. This permanent acquisition use and related temporary occupancy as documented in the TIS FEIS is no longer required as part of the project. See below for the change to potential impact changes to this resource.

Facilities with Potential Section 4(f) impacts – Permanent Acquisition or Temporary Occupation

Perry Harvey Sr. Park – 9.2 acre Park

Figure 2 shows the Design Options in relation to Perry Harvey Sr. Park as well as noting the potential direct impacts. Based on changes made to the conceptual design of the project build alternatives and options of the Downtown Tampa Interchange area, proposed ROW would still be required from Perry Harvey Sr. Park for three of the four Design Options. For all Design Options, Orange Avenue north of Scott Street would be removed and the limited access ROW would be shifted along the park property line impacting access to the northwest portion of the park and up to 28 parking spaces along Central Avenue between Scott Street and from west side north of Scott Street. **Figure 3** shows the north end of Perry Harvey Sr Park and the existing parking along Central Avenue north of Scott Street.

For Design Options A and B, a potential corner clip may be required at the north end of Orange Avenue along the west side of the park and at the north end where the basketball courts are located. The area of acquisition would be approximately 0.1 acres (1% of the total park boundary area) for Design Options A and B and would not impact any features or attributes of the park.

For Design Option C, the proposed ramp would be elevated above the existing basketball courts and relocated skateboard area which would require a larger footprint of ROW at approximately 1.8 acres (20% of the total park boundary area). It is possible that park elements would remain, as the location where the ramp and northbound express lanes meet would be elevated on a viaduct and constructed above these facilities giving no less than 16.5 feet of vertical clearance. Additionally, this same ramp would require a strip of ROW along Central Avenue where Central Avenue crosses under I-275.

For Design Option D, no new ROW is anticipated and would not impact any of the features or attributes of the park., therefore there is no use to the park with this option.

Table 3 – Preliminary Assessment of Parks and Recreation Facilities with Potential Section 4(f) Use (Permanent Acquisition or Temporary Occupation)

Project Segment	FEIS ID#	Resource Description				Potential Permanent or Temporary Use/Impact Description				Recommended Section 4(f) applicability
		Resource	Agency with Jurisdiction	Type – Activities, Features, Attributes	Area	Permanent Acquisition or Temporary Occupation	Noise Effects	Visual Effects	Access Effects	
2B	3	Julian B Lane Riverfront Park	City of Tampa	Public Park - includes picnic shelters, grilling areas, playground, restrooms, athletic fields, band shell, tennis courts, racquetball courts, trail, basketball courts, dog parks, boat ramps	26.0 acres	Potential minimal right of way acquisition in northeast corner of park property not in the vicinity of active park resources Design Options A & B – approx. 0.05 acres, Design Options approx. 0.04 acres. Landscaping and an existing raised bat house is in this area close to the right of way line.	To be determined. Located adjacent to Laurel Street that runs as a frontage road along I-275. Noise barrier present.	Extent varies with alternative and to be determined – located adjacent to Laurel Street that runs as a frontage road along I-275.	Left turn exiting park on Laurel to access North Boulevard will need to take longer route to reach North Boulevard due to 1-way conversion of Laurel Street west of this access point. Existing distance is 500', proposed distance ~2,000'.	Applicable - de minimis corner clip of park property, slight traffic access change at Laurel Street (traffic exiting park traveling to North Boulevard) due to Laurel Street being converted from 2-way to 1-way vehicle travel with addition of I-275 exit ramp to North Boulevard.
2B	6	Perry Harvey Sr. Park	City of Tampa	Public Park - includes greenspace, restrooms, skate park, splash pad and basketball courts	9.2 Acres	Section 4(f) permanent acquisition use documented in the TIS FEIS is no longer applicable with Design Options under consideration. Permanent Acquisition: Design Options A & B – Potential R/W Clip in NW corner of park Design Option C – Proposed R/W along former Central Ave , and direct impact through right of way acquisition and indirect impact to basketball courts and skate park via bridge to be constructed above a portion of these park resources Design Option D – None Temporary Occupation: To be determined for Design Options A, B, C. No temporary occupation Design Option D	Extent varies with alternative and to be determined.	Extent varies with alternative and to be determined.	Extent varies with alternative and to be determined. Closing of Orange Ave north of Scott St and Central Ave along northwest edge of park.	Applicable, impacts vary by Design Option Design Opts A & B de minimis corner clip impact in NW corner of park (0.1 acres) Design Option C Permanent Acquisition with bridge over basketball court and skate park area. (1.8 acres of right of way acquisition includes bridged area above basketball and skate park) Design Option D No Use

Source: Florida Geographic Data Library and City of Tampa Parks and Recreation

Table 4 – Preliminary Assessment of Parks and Recreation Facilities with No Potential Section 4(f) Use

Project Segment	FEIS ID#	Resource Description				Potential Permanent or Temporary Impact Description				Recommended Section 4(f) applicability
		Resource	Agency with Jurisdiction	Type – Activities, Features, Attributes	Area	Permanent Acquisition, Temporary Occupation or Comments	Noise Effects	Visual Effects	Access Effects	
1A		Cypress Point Park	City of Tampa	Public Park - The park includes an asphalt trail and nature trail. Park amenities include green space, bicycle racks, benches, a boardwalk, a canoe launch and picnic pavilions.	43.77 Acres	None	None - Outside 66dB contour	None	None	No Involvement (No Use)
1A		Diamondback Nature Preserve	Hillsborough County	Public Conservation and Recreation Area - Contains cabbage palm hammocks, salt marsh, mangroves, mud flats and a tidal creek. Open for hiking and fishing.	10.4 Acres	None	None - Outside 66dB contour	None	None	No Use
1A		Charles B Williams Park	City of Tampa	Public Park - The park includes greenspace, playground, basketball court, shuffle board court, picnic tables and pavilions.	2.2 Acres	None	None - Outside 66dB contour	None All I-275 widening to the median	None	No Involvement (No Use)
2A		Jim Walter Park	City of Tampa	Public Park - The park includes recreational elements including greenspace, picnic tables and a recreation trail.	1.22 Acres	None	None - Outside 66dB contour	None All I-275 widening to the median	None	No Involvement (No Use)
2A	1	MacFarlane Park	City of Tampa	Public Park - The park includes a 1.2 mile trail loop. Other park amenities include picnic tables, grills, restrooms, ball fields, play courts, tennis and racquetball courts, a playground and a community center.	32.7 Acres	None	None - Outside 66dB contour Noise barrier present.	None All I-275 widening to the median	Enhanced - connection will be provided to West Tampa Greenway	No Use
2A	2	Salcines Mini-Park	City of Tampa	Public Park - Salcines Park is a public square with low walls, tables and seating to facilitate passive recreational use. The park includes a fixed shelter and mural.	0.09 Acres	None	None - Outside 66dB contour Noise barrier present.	None All I-275 widening to the median	None	No Involvement (No Use)
2B		Hillsborough River Paddling Trail	State of Florida DEP	Runs through Hillsborough River for wildlife viewing, different areas for varying paddling skill levels.	Linear	None Crosses under I-275 at Hillsborough River. Will be maintained under all design options. No intent to close waterway.	None	None	None	No Use
2B		Water Works Park	City of Tampa	Public Park - includes picnic shelters, playground, restrooms, band shell, dog park, splash pad, boat dock and trail	4.5 Acres	None	None - Outside 66dB contour	Limited due to distance from I-275	None	No Use
2B	4	Phil Bourquardez Park	City of Tampa	PARK HAS BEEN CLOSED	Park has been closed with no indication of re-opening.					No Involvement (No Use)

Table 4 – Preliminary Assessment of Parks and Recreation Facilities with No Potential Section 4(f) Use

Project Segment	FEIS ID#	Resource Description				Potential Permanent or Temporary Impact Description				Recommended Section 4(f) applicability
		Resource	Agency with Jurisdiction	Type – Activities, Features, Attributes	Area	Permanent Acquisition, Temporary Occupation or Comments	Noise Effects	Visual Effects	Access Effects	
2B	5	Herman Massey Park	City of Tampa	Public Park - includes public greenspace	1.3 Acres	None	None - Outside 66dB contour	None Numerous buildings block sight lines.	None	No Involvement (No Use)
2B	7	Fernando Mesa Park (Formerly Morgan Street Mini Park)	City of Tampa	Public Park – includes playground, picnic shelters and restrooms	0.5 Acres	None	None - Outside 66dB contour	None Several buildings block sight lines.	None	No Involvement (No Use)
2B		Tampa Park Plaza	City of Tampa	Public Park - includes greenspace, ball fields, playground, restrooms, picnic shelters, shuffle courts and basketball courts	6.8 Acres	None	None - Outside 66dB contour	None Several buildings block sight lines.	None	No Involvement (No Use)
2B	10	Cuscaden Park and Playground	City of Tampa	Public Park - includes picnic shelters, playground, restrooms, athletic field, ball diamonds, pool, community center and basketball courts	8.3 Acres	None	None - Outside 66dB contour	None Located 850 feet from I-4 existing ROW.	Enhanced, opening of access from I-4 to 14 th /15 th St would create easier regional access. Access from I-275 could be slightly affected with the closure of Floribraska ramps.	No Involvement (No Use)
2B	8	Robles Park and Playground	City of Tampa	Public Park - includes playground, restrooms, walking trail and basketball courts	16.0 Acres	None	Extent varies with alternative and to be determined.	Extent varies with alternative and to be determined, located adjacent to I-275 existing ROW.	Local access would be enhanced with Design Options A/B if city streets are reconnected under I-275. No change in Options C/D. Access from I-275 could be slightly affected with the closure of Floribraska ramps.	No Use
2B	9	Borrell Park (Formerly Nebraska Ave Park)	City of Tampa	Public Park - includes picnic shelters, playground and restrooms	3.1 Acres	None	Extent varies with alternative and to be determined.	Extent varies with alternative and to be determined, located 250 feet from I-275 existing ROW.	Local access would be enhanced with Design Options A & B if city streets are reconnected under I-275. No change in Options C/D. Access from I-275 could be slightly affected with the closure of Floribraska ramps.	No Use
2B	15	Ragan Park	City of Tampa	Public Park - includes playground, trail, restrooms and community center	8.4 Acres	None	None - Outside 66dB contour	None Numerous buildings blocking sight lines.	None	No Involvement (No Use)

Table 4 – Preliminary Assessment of Parks and Recreation Facilities with No Potential Section 4(f) Use

Project Segment	FEIS ID#	Resource Description				Potential Permanent or Temporary Impact Description				Recommended Section 4(f) applicability
		Resource	Agency with Jurisdiction	Type – Activities, Features, Attributes	Area	Permanent Acquisition, Temporary Occupation or Comments	Noise Effects	Visual Effects	Access Effects	
2B	17	Angus Goss Memorial Pool (now Angus Moss Dog Park)	City of Tampa	Former public swimming pool has been closed, but is now a dog park	1.0 Acre	None	None - Outside 66dB contour	None	None	No Involvement (No Use)
3A		Ybor City Museum State Park	State of Florida	Park adjacent to museum	0.6 Acres including museum	None	None - Outside 66dB contour	None Buildings block sight lines	None	No Involvement (No Use)
3A	11	Centennial Park	City of Tampa	Public Park - includes greenspace, restrooms, picnic shelters, trail and Ybor Arts Studio	1.9 Acres	None	None - Outside 66dB contour	None Buildings block sight lines	None	No Involvement (No Use)
3A		East Ybor Park	City of Tampa	Public Park - includes Picnic shelters, grills, playground and basketball courts	0.6 Acres	None	None - Outside 66dB contour. Noise barrier present.	None All I-4 widening to the median	None	No Involvement (No Use)
3A		Alfred Barnes Jr Park	City of Tampa	Public Park - includes greenspace, ball diamonds, restrooms, playground, picnic shelters, tennis courts, racquetball courts and basketball courts	13.1 Acres	None	None - Outside 66dB contour. Noise barrier present.	None All I-4 widening to the median	None	No Involvement (No Use)
3B	13	Highland Pines Park	City of Tampa	Public Park - includes greenspace, athletic fields, playground, restrooms, picnic shelters, grilling area, outdoor fitness area, trails, tennis courts, racquetball courts, community center with computer lab and basketball courts	12.2 Acres	None	None - Outside 66dB contour.	None All I-4 widening to the median	None	No Involvement (No Use)
3B	14	Oak Park	City of Tampa	Public Park - includes greenspace, athletic fields, ball fields, restrooms, picnic shelters, community center with computer lab and basketball courts	3.6 Acres	None	None - Outside 66dB contour	None	None	No Involvement (No Use)
3C*	12	McKay Bay Nature Park/Wildlife Refuge	City of Tampa	Nature Park - with boardwalk trail and national avian sanctuary with bird- and wildlife- watching opportunities	36.0 acres	None	None – outside 66dB contour. Is adjacent to 1996 TIS FEIS Segment 3C, which has been constructed.	None	None	No Involvement (No Use)

* Outside SEIS limits, but shown as it was in the 1996 TIS FEIS

Source: Florida Geographic Data Library and City of Tampa Parks and Recreation

Figures 4 & 5 show photo-images prepared with existing ground level pictures and a computer generated depiction of the proposed Design Options. Perspectives are shown from the basketball courts and skate park. Temporary impacts have yet to be determined for this resource as the Design Options differ greatly in potential impacts. Coordination is ongoing with the City of Tampa related to the impacts and potential mitigation.

Julian B. Lane Park – 26.0 acre Park

Figure 6 shows the Design Options in relation to Julian B Lane Park. The park is situated south of I-275 between North Boulevard and the Hillsborough River with Laurel Street forming its northern boundary adjacent to I-275. The park was recently redeveloped in close coordination with FDOT as an exit ramp has been proposed as part of the Tampa Interstate Study FEIS but has not yet been constructed.

All four Design Options will potentially require the minimal acquisition of right of way along I-275 for construction of bridge structures above existing ground. This location is in the far north east corner of the park property located between Green Street and the Hillsborough River. This area contains existing landscaping, and is close to an existing raised bat house (not shown on the park master plan), but no active park resources. Design Options A & B will require approximately 2100 square feet (0.05 acres) of right of way and Design Options C & D will require approximately 1600 square feet (0.04 acres) of right of way. **Figure 7** shows a closer view of Figure 6 in this north area of the park for all four Design Options. **Figure 8** shows an overlay of the potential right of way lines for Design Options A&B and for Design Options C&D on the Park Master Plan for reference.

None of the four Design Options will require any permanent acquisition or temporary occupation of the Julian B Lane Park property south of Laurel Street. In addition, none of the Design Options will require any use of the area north of Laurel Street designated areas including the dog parks, non-motorized boat ramp, water taxi station, maintenance building nor parking areas.

Laurel Street was planned to become a one-way roadway (eastbound only) when the I-275 ramps to North Boulevard are constructed to avoid the potential for wrong-way drivers on the exit ramp. The north entrance to Julian B. Lane Park is located on Laurel Street approximately 500' east of North Boulevard. Each of the Design Options show a slightly different configuration in close proximity to the park that could alter the access from the park and connection through Laurel, Green Street and North Boulevard. With all Design Options any access changes for park patrons is minimally altered. The driving distance for park patrons exiting the park to reach North Boulevard will increase from 500' to approximately 2,000 feet. Design Options A & B will be reconstructing I-275 between North Boulevard and the Hillsborough River and the interstate lanes are planned to be placed on a bridge, creating a longer viaduct where additional parking can be provided that can serve the park. In Design Options C & D, the existing I-275 pavement will remain while which will require a slightly different configuration, but both options provide this additional parking, but in a different location. Coordination is ongoing with the City of Tampa and the Blake High School located north of I-275 related to the proposed concept layouts of the road network, access to/from the park and school and proposed parking.

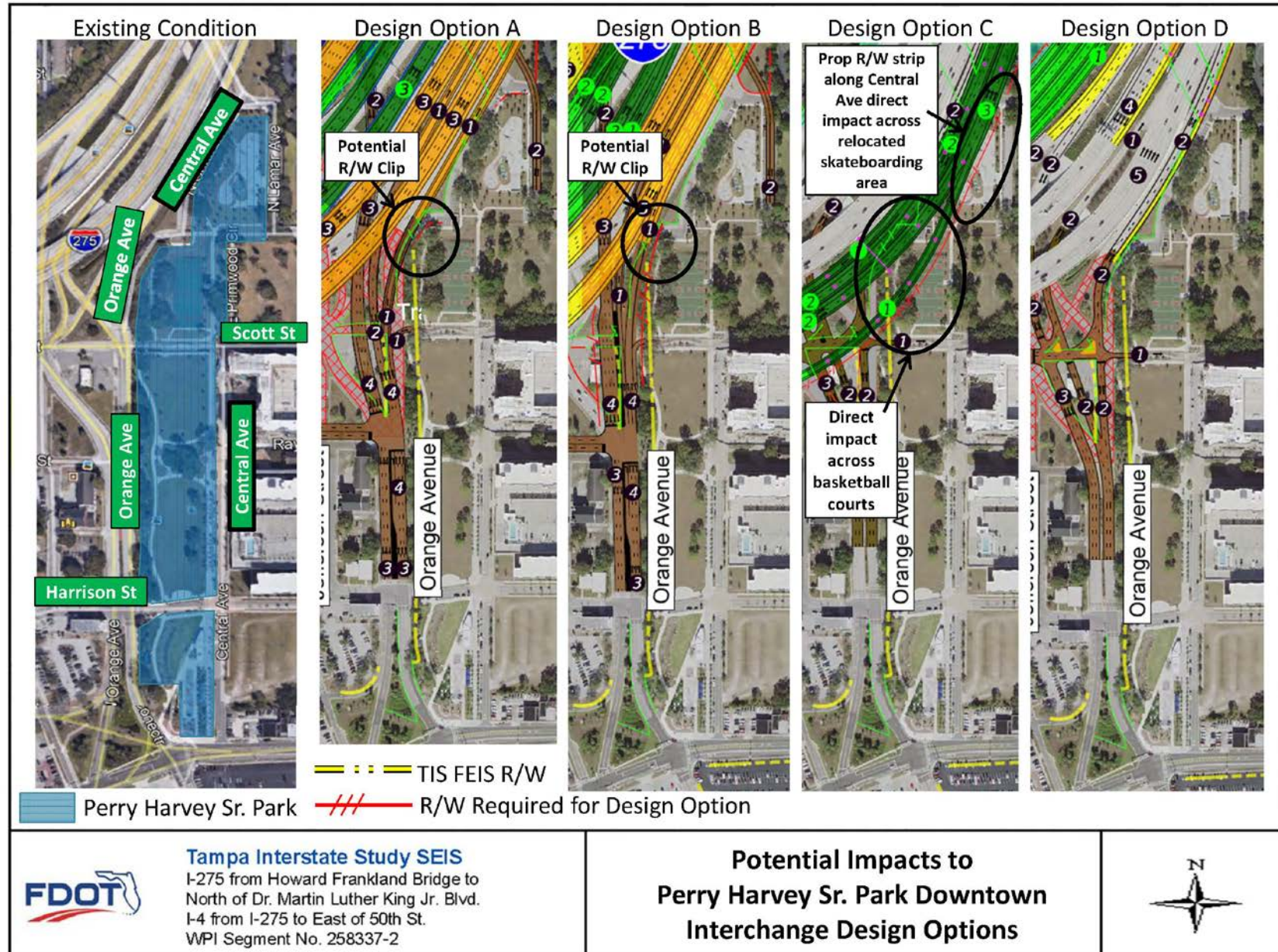


Figure 2 – Perry Harvey Park Sr. Site Layout

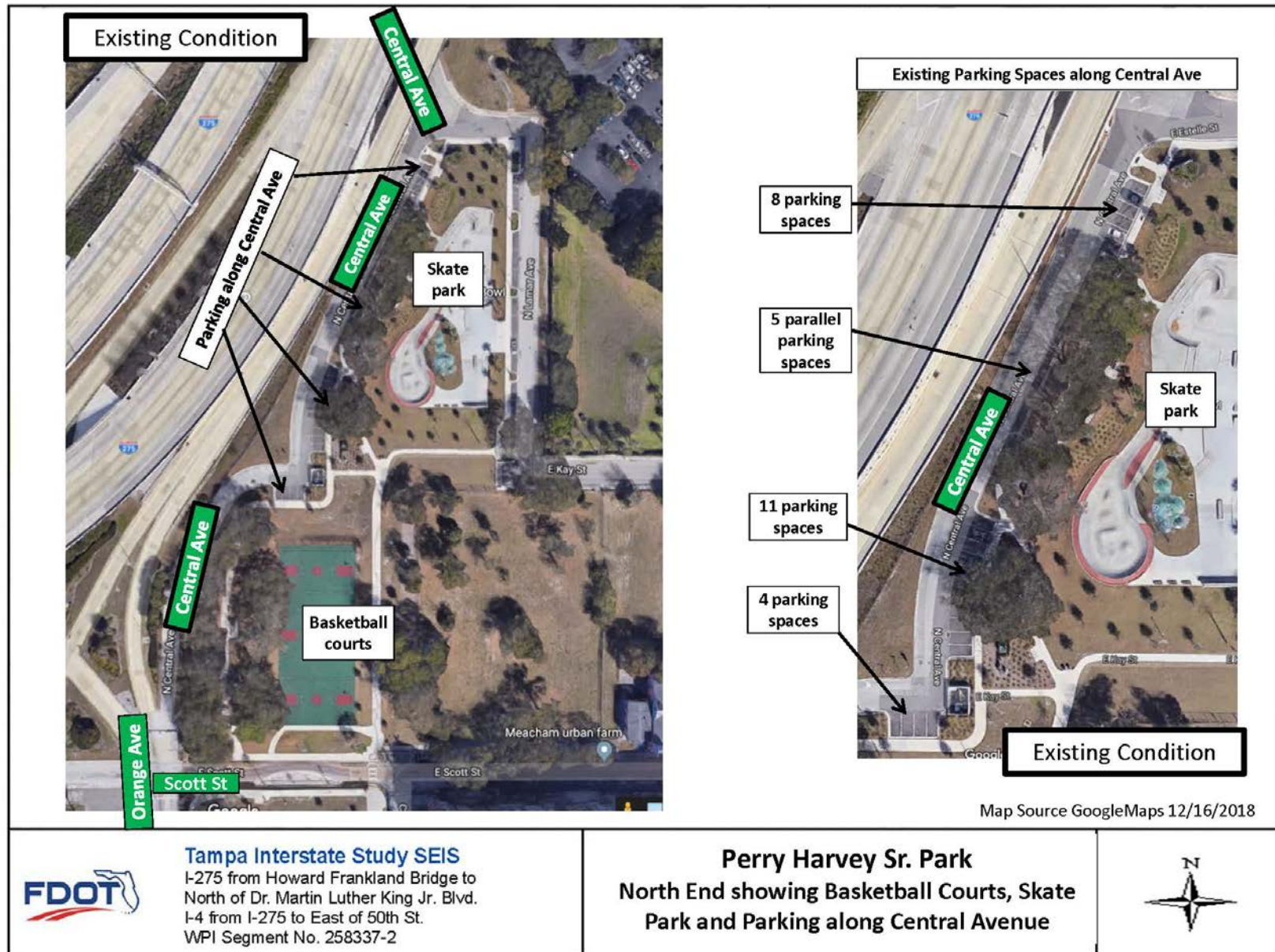


Figure 3 – Perry Harvey Park Sr. Map Showing Existing North End of Park



Figure 4 – Photo-images of Perry Harvey Sr. Park – Basketball Court Area



Figure 5 – Photo-images of Perry Harvey Sr. Park – Skate Park Area



Figure 6 – Julian B Lane Riverfront Park Site Layout & Concept Plans

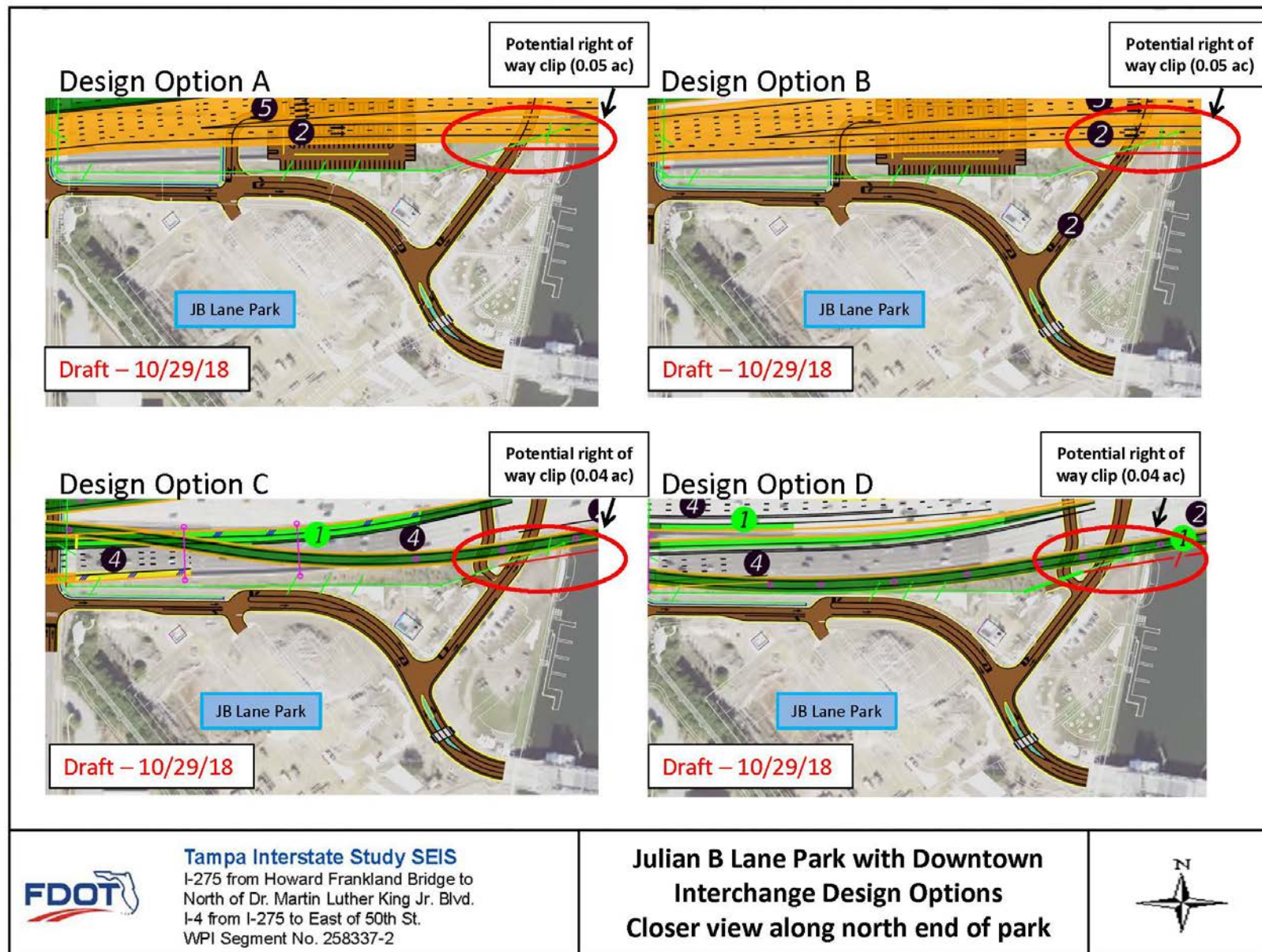


Figure 7 – Julian B Lane Riverfront Park – Closer View of Site Layout & Concept Plans

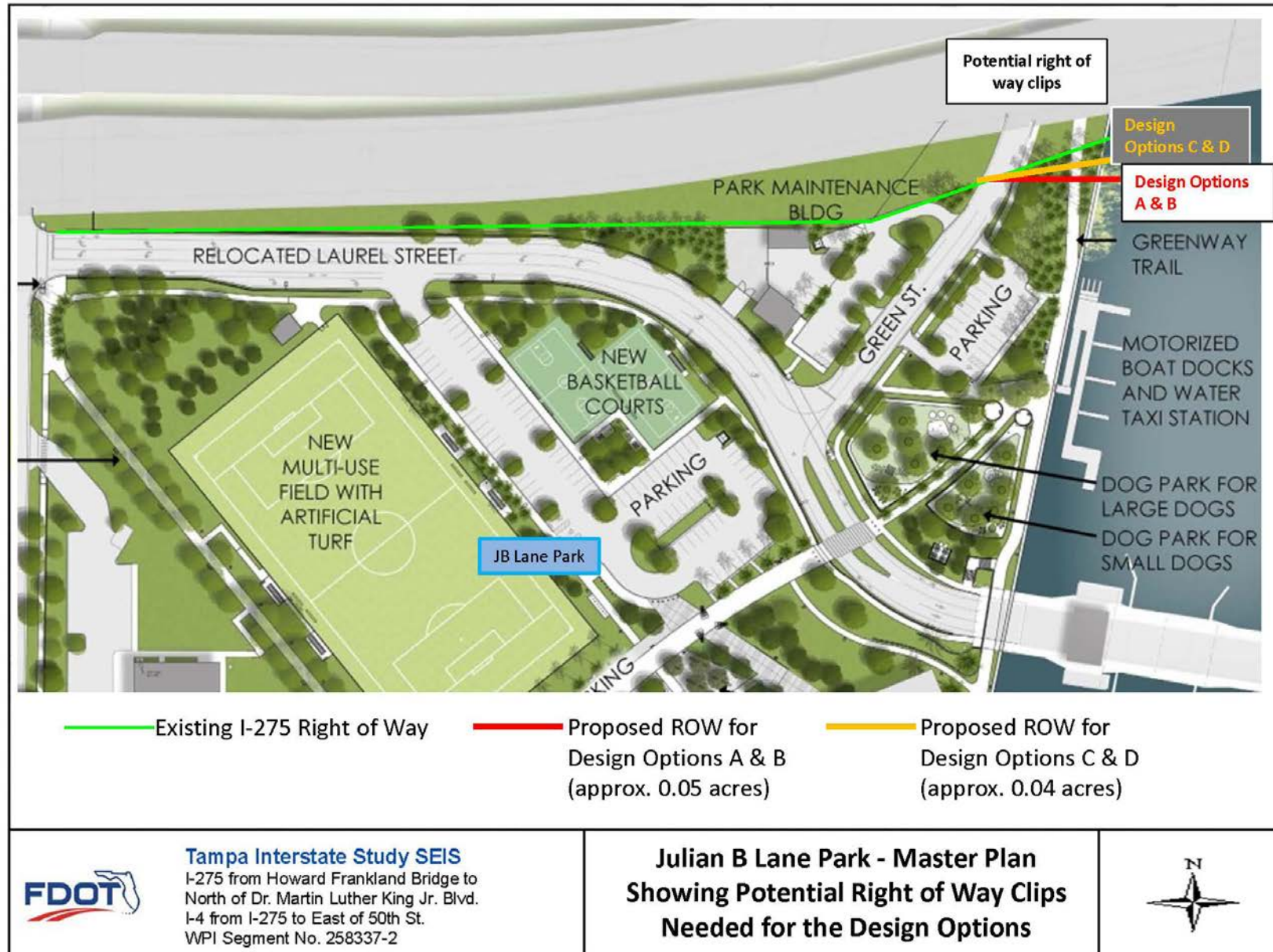


Figure 8 – Julian B Lane Riverfront Park – Potential Right of Way Clips Overlaid on Park Master Plan